

Anti-LRP6 (pT1479) Antibody
Rabbit polyclonal antibody to LRP6 (pT1479)
Catalog # AP61279

Specification

Anti-LRP6 (pT1479) Antibody - Product Information

Application	WB
Primary Accession	O75581
Other Accession	O88572
Reactivity	Human, Mouse
Host	Rabbit
Clonality	Polyclonal
Calculated MW	180429

Anti-LRP6 (pT1479) Antibody - Additional Information

Gene ID 4040

Other Names

Low-density lipoprotein receptor-related protein 6; LRP-6

Target/Specificity

KLH-conjugated synthetic peptide encompassing a sequence within the C-term region of human LRP6 (pT1479). The exact sequence is proprietary.

Dilution

WB~~WB (1/500 - 1/1000)

Format

Liquid in 0.42% Potassium phosphate, 0.87% Sodium chloride, pH 7.3, 30% glycerol, and 0.09% (W/V) sodium azide.

Storage

Store at -20 °C.Stable for 12 months from date of receipt

Anti-LRP6 (pT1479) Antibody - Protein Information

Name LRP6

Function

Component of the Wnt-Fzd-LRP5-LRP6 complex that triggers beta-catenin signaling through inducing aggregation of receptor-ligand complexes into ribosome-sized signalosomes (PubMed:11357136, PubMed:11448771, PubMed:15778503, PubMed:16341017, PubMed:16513652, PubMed:17326769, PubMed:17326769).

href="http://www.uniprot.org/citations/17400545" target="_blank">17400545, PubMed:19107203, PubMed:19293931, PubMed:19801552, PubMed:28341812). Cell-surface coreceptor of Wnt/beta- catenin signaling, which plays a pivotal role in bone formation (PubMed:11357136, PubMed:11448771, PubMed:15778503, PubMed:16341017, PubMed:16513652, PubMed:17326769, PubMed:17400545, PubMed:19107203, PubMed:19293931, PubMed:19801552, PubMed:28341812). The Wnt-induced Fzd/LRP6 coreceptor complex recruits DVL1 polymers to the plasma membrane which, in turn, recruits the AXIN1/GSK3B-complex to the cell surface promoting the formation of signalosomes and inhibiting AXIN1/GSK3-mediated phosphorylation and destruction of beta-catenin (PubMed:16513652). Required for posterior patterning of the epiblast during gastrulation (By similarity).

Cellular Location

Cell membrane; Single-pass type I membrane protein Endoplasmic reticulum. Membrane raft. Note=On Wnt signaling, undergoes a cycle of caveolin- or clathrin-mediated endocytosis and plasma membrane location. Released from the endoplasmic reticulum on palmitoylation Mono-ubiquitination retains it in the endoplasmic reticulum in the absence of palmitoylation. On Wnt signaling, phosphorylated, aggregates and colocalizes with AXIN1 and GSK3B at the plasma membrane in LRP6- signalosomes (By similarity). Chaperoned to the plasma membrane by HSP90B1 and MESD (PubMed:23572575). {ECO:0000250|UniProtKB:O88572, ECO:0000269|PubMed:23572575}

Tissue Location

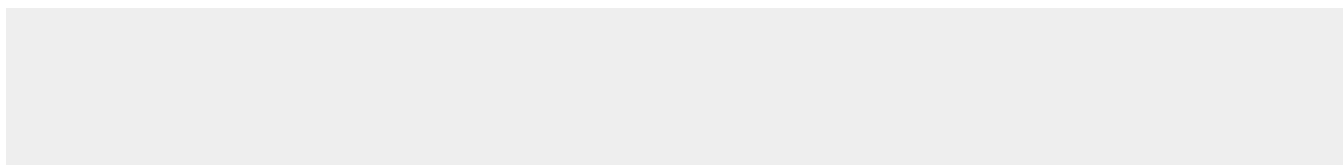
Widely coexpressed with LRP5 during embryogenesis and in adult tissues

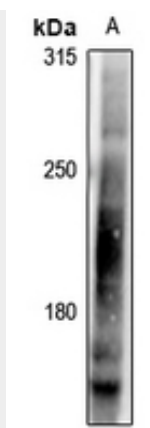
Anti-LRP6 (pT1479) Antibody - Protocols

Provided below are standard protocols that you may find useful for product applications.

- [Western Blot](#)
- [Blocking Peptides](#)
- [Dot Blot](#)
- [Immunohistochemistry](#)
- [Immunofluorescence](#)
- [Immunoprecipitation](#)
- [Flow Cytometry](#)
- [Cell Culture](#)

Anti-LRP6 (pT1479) Antibody - Images





Western blot analysis of LRP6 (pT1479) expression in A375 (A) whole cell lysates.

Anti-LRP6 (pT1479) Antibody - Background

KLH-conjugated synthetic peptide encompassing a sequence within the C-term region of human LRP6 (pT1479). The exact sequence is proprietary.