

Anti-TPD52L2 Antibody
Rabbit polyclonal antibody to TPD52L2
Catalog # AP61297

Specification

Anti-TPD52L2 Antibody - Product Information

Application	WB
Primary Accession	O43399
Other Accession	O9CYZ2
Reactivity	Human, Mouse, Rat, Monkey
Host	Rabbit
Clonality	Polyclonal
Calculated MW	22238

Anti-TPD52L2 Antibody - Additional Information

Gene ID 7165

Other Names

Tumor protein D54; hD54; Tumor protein D52-like 2

Target/Specificity

KLH-conjugated synthetic peptide encompassing a sequence within the C-term region of human TPD52L2. The exact sequence is proprietary.

Dilution

WB~~WB (1/500 - 1/1000)

Format

Liquid in 0.42% Potassium phosphate, 0.87% Sodium chloride, pH 7.3, 30% glycerol, and 0.09% (W/V) sodium azide.

Storage

Store at -20 °C. Stable for 12 months from date of receipt

Anti-TPD52L2 Antibody - Protein Information

Name TPD52L2

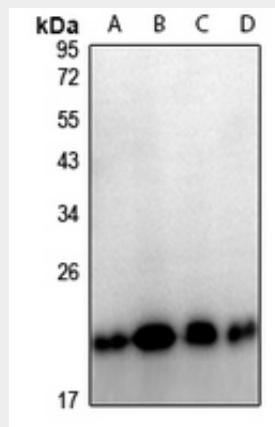
Anti-TPD52L2 Antibody - Protocols

Provided below are standard protocols that you may find useful for product applications.

- [Western Blot](#)
- [Blocking Peptides](#)
- [Dot Blot](#)

- [Immunohistochemistry](#)
- [Immunofluorescence](#)
- [Immunoprecipitation](#)
- [Flow Cytometry](#)
- [Cell Culture](#)

Anti-TPD52L2 Antibody - Images



Western blot analysis of TPD52L2 expression in Jurkat (A), HEK293T (B), Raw264.7 (C), PC12 (D) whole cell lysates.

Anti-TPD52L2 Antibody - Background

KLH-conjugated synthetic peptide encompassing a sequence within the C-term region of human TPD52L2. The exact sequence is proprietary.