

Anti-ST18 Antibody
Rabbit polyclonal antibody to ST18
Catalog # AP61298**Specification**

Anti-ST18 Antibody - Product Information

Application	WB, IH, IF
Primary Accession	O60284
Other Accession	Q80TY4
Reactivity	Human, Mouse, Rat, Monkey
Host	Rabbit
Clonality	Polyclonal
Calculated MW	115155

Anti-ST18 Antibody - Additional Information**Gene ID** 9705**Other Names**

KIAA0535; ZNF387; Suppression of tumorigenicity 18 protein; Zinc finger protein 387

Target/Specificity

Recognizes endogenous levels of ST18 protein.

Dilution

WB~~WB (1/500 - 1/1000), IH (1/50 - 1/200), IF/IC (1/100 - 1/500)

IH~~WB (1/500 - 1/1000), IH (1/50 - 1/200), IF/IC (1/100 - 1/500)

IF~~WB (1/500 - 1/1000), IH (1/50 - 1/200), IF/IC (1/100 - 1/500)

Format

Liquid in 0.42% Potassium phosphate, 0.87% Sodium chloride, pH 7.3, 30% glycerol, and 0.09% (W/V) sodium azide.

Storage

Store at -20 °C. Stable for 12 months from date of receipt

Anti-ST18 Antibody - Protein Information**Name** ST18**Synonyms** KIAA0535, ZNF387**Function**

Repressor that binds to DNA sequences containing a bipartite element consisting of a direct repeat of the sequence 5'-AAAGTTT-3' separated by 2-9 nucleotides. Represses basal transcription activity from target promoters (By similarity). Inhibits colony formation in cultured breast cancer cells.

Cellular Location

Nucleus.

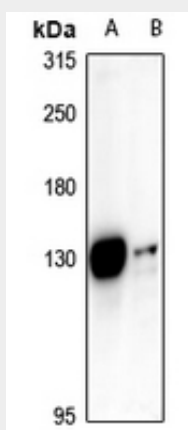
Tissue Location

Detected at low levels in heart, liver, kidney, skeletal muscle, pancreas, testis, ovary and prostate.
Detected at even lower levels in mammary epithelial cells and breast cancer cells

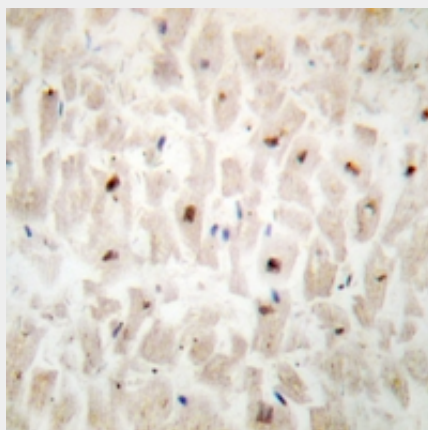
Anti-ST18 Antibody - Protocols

Provided below are standard protocols that you may find useful for product applications.

- [Western Blot](#)
- [Blocking Peptides](#)
- [Dot Blot](#)
- [Immunohistochemistry](#)
- [Immunofluorescence](#)
- [Immunoprecipitation](#)
- [Flow Cytometry](#)
- [Cell Culture](#)

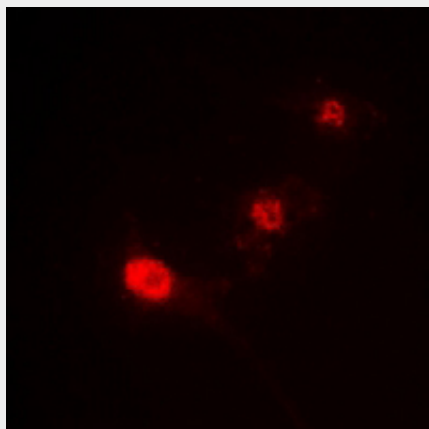
Anti-ST18 Antibody - Images

Western blot analysis of ST18 expression in mouse kidney (A), rat stomach (B) whole cell lysates.



Immunohistochemical analysis of ST18 staining in human heart formalin fixed paraffin embedded tissue section. The section was pre-treated using heat mediated antigen retrieval with sodium

citrate buffer (pH 6.0). The section was then incubated with the antibody at room temperature and detected using an HRP conjugated compact polymer system. DAB was used as the chromogen. The section was then counterstained with haematoxylin and mounted with DPX.



Immunofluorescent analysis of ST18 staining in A549 cells. Formalin-fixed cells were permeabilized with 0.1% Triton X-100 in TBS for 5-10 minutes and blocked with 3% BSA-PBS for 30 minutes at room temperature. Cells were probed with the primary antibody in 3% BSA-PBS and incubated overnight at 4 °C in a humidified chamber. Cells were washed with PBST and incubated with a Alexa Fluor 594-conjugated secondary antibody (red) in PBS at room temperature in the dark.

Anti-ST18 Antibody - Background

KLH-conjugated synthetic peptide encompassing a sequence within the N-term region of human ST18. The exact sequence is proprietary.