

Anti-FARP2 Antibody
Rabbit polyclonal antibody to FARP2
Catalog # AP61299**Specification**

Anti-FARP2 Antibody - Product Information

Application	WB, IF/IC
Primary Accession	O94887
Other Accession	O91VS8
Reactivity	Human, Mouse, Rat
Host	Rabbit
Clonality	Polyclonal
Calculated MW	119888

Anti-FARP2 Antibody - Additional Information**Gene ID** 9855**Other Names**

KIAA0793; PLEKHC3; FERM RhoGEF and pleckstrin domain-containing protein 2; FERM domain including RhoGEF; FIR; Pleckstrin homology domain-containing family C member 3; PH domain-containing family C member 3

Target/Specificity

Recognizes endogenous levels of FARP2 protein.

Dilution

WB~~WB (1/500 - 1/1000), IF/IC (1/100 - 1/500)
IF/IC~~N/A

Format

Liquid in 0.42% Potassium phosphate, 0.87% Sodium chloride, pH 7.3, 30% glycerol, and 0.09% (W/V) sodium azide.

Storage

Store at -20 °C. Stable for 12 months from date of receipt

Anti-FARP2 Antibody - Protein Information**Name** FARP2**Synonyms** KIAA0793, PLEKHC3**Function**

Functions as a guanine nucleotide exchange factor that activates RAC1. May have relatively low activity. Plays a role in the response to class 3 semaphorins and remodeling of the actin cytoskeleton. Plays a role in TNFSF11-mediated osteoclast differentiation, especially in podosome rearrangement and reorganization of the actin cytoskeleton. Regulates the activation of ITGB3,

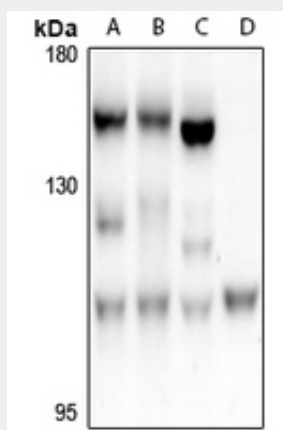
integrin signaling and cell adhesion (By similarity).

Anti-FARP2 Antibody - Protocols

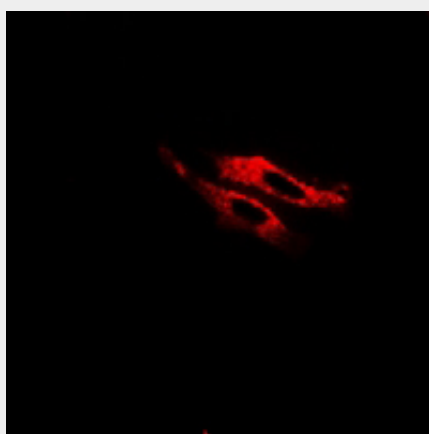
Provided below are standard protocols that you may find useful for product applications.

- [Western Blot](#)
- [Blocking Peptides](#)
- [Dot Blot](#)
- [Immunohistochemistry](#)
- [Immunofluorescence](#)
- [Immunoprecipitation](#)
- [Flow Cytometry](#)
- [Cell Culture](#)

Anti-FARP2 Antibody - Images



Western blot analysis of FARP2 expression in A375 (A), LO2 (B), CT26 (C), PMVEC (D) whole cell lysates.



Immunofluorescent analysis of FARP2 staining in HepG2 cells. Formalin-fixed cells were permeabilized with 0.1% Triton X-100 in TBS for 5-10 minutes and blocked with 3% BSA-PBS for 30 minutes at room temperature. Cells were probed with the primary antibody in 3% BSA-PBS and incubated overnight at 4 °C in a humidified chamber. Cells were washed with PBST and incubated with a Alexa Fluor 594-conjugated secondary antibody (red) in PBS at room temperature in the dark.

Anti-FARP2 Antibody - Background

KLH-conjugated synthetic peptide encompassing a sequence within the center region of human FARP2. The exact sequence is proprietary.