

Anti-DCR3 Antibody
Rabbit polyclonal antibody to DCR3
Catalog # AP61300**Specification**

Anti-DCR3 Antibody - Product Information

Application	WB, IH, IF
Primary Accession	O95407
Reactivity	Human
Host	Rabbit
Clonality	Polyclonal
Calculated MW	32680

Anti-DCR3 Antibody - Additional Information**Gene ID** 8771**Other Names**DCR3; TR6; Tumor necrosis factor receptor superfamily member 6B; Decoy receptor 3; DcR3;
Decoy receptor for Fas ligand; M68**Target/Specificity**

Recognizes endogenous levels of DCR3 protein.

Dilution

WB~~WB (1/500 - 1/1000), IH (1/50 - 1/200), IF/IC (1/100 - 1/500)

IH~~WB (1/500 - 1/1000), IH (1/50 - 1/200), IF/IC (1/100 - 1/500)

IF~~WB (1/500 - 1/1000), IH (1/50 - 1/200), IF/IC (1/100 - 1/500)

Format

Liquid in 0.42% Potassium phosphate, 0.87% Sodium chloride, pH 7.3, 30% glycerol, and 0.09% (W/V) sodium azide.

Storage

Store at -20 °C. Stable for 12 months from date of receipt

Anti-DCR3 Antibody - Protein Information**Name** TNFRSF6B**Synonyms** DCR3, TR6**Function**

Decoy receptor that can neutralize the cytotoxic ligands TNFS14/LIGHT, TNFSF15 and TNFSF6/FASL. Protects against apoptosis.

Cellular Location

Secreted.

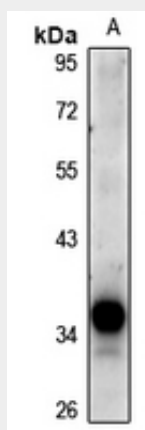
Tissue Location

Detected in fetal lung, brain and liver. Detected in adult stomach, spinal cord, lymph node, trachea, spleen, colon and lung. Highly expressed in several primary tumors from colon, stomach, rectum, esophagus and in SW480 colon carcinoma cells

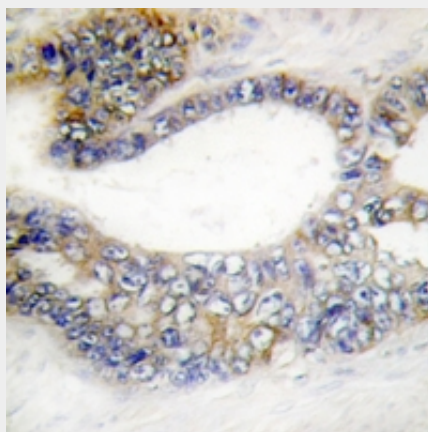
Anti-DCR3 Antibody - Protocols

Provided below are standard protocols that you may find useful for product applications.

- [Western Blot](#)
- [Blocking Peptides](#)
- [Dot Blot](#)
- [Immunohistochemistry](#)
- [Immunofluorescence](#)
- [Immunoprecipitation](#)
- [Flow Cytometry](#)
- [Cell Culture](#)

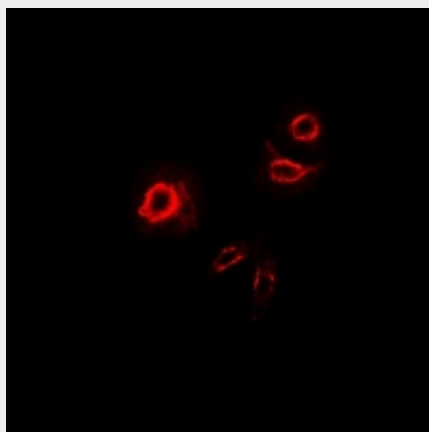
Anti-DCR3 Antibody - Images

Western blot analysis of DCR3 expression in HCT116 (A) whole cell lysates.



Immunohistochemical analysis of DCR3 staining in human colon cancer formalin fixed paraffin embedded tissue section. The section was pre-treated using heat mediated antigen retrieval with sodium citrate buffer (pH 6.0). The section was then incubated with the antibody at room temperature and detected using an HRP conjugated compact polymer system. DAB was used as

the chromogen. The section was then counterstained with haematoxylin and mounted with DPX.



Immunofluorescent analysis of DCR3 staining in HepG2 cells. Formalin-fixed cells were permeabilized with 0.1% Triton X-100 in TBS for 5-10 minutes and blocked with 3% BSA-PBS for 30 minutes at room temperature. Cells were probed with the primary antibody in 3% BSA-PBS and incubated overnight at 4 °C in a humidified chamber. Cells were washed with PBST and incubated with a Alexa Fluor 594-conjugated secondary antibody (red) in PBS at room temperature in the dark.

Anti-DCR3 Antibody - Background

KLH-conjugated synthetic peptide encompassing a sequence within the C-term region of human DCR3. The exact sequence is proprietary.