

Anti-CBX6 Antibody
Rabbit polyclonal antibody to CBX6
Catalog # AP61301**Specification**

Anti-CBX6 Antibody - Product Information

Application	WB, IHC
Primary Accession	O95503
Other Accession	Q9DBY5
Reactivity	Human, Mouse, Rat, Bovine, Dog
Host	Rabbit
Clonality	Polyclonal
Calculated MW	43898

Anti-CBX6 Antibody - Additional Information**Gene ID** 23466**Other Names**

Chromobox protein homolog 6

Target/Specificity

Recognizes endogenous levels of CBX6 protein.

Dilution

WB~~WB (1/500 - 1/1000), IH (1/50 - 1/200)

IHC~~1:100~500

Format

Liquid in 0.42% Potassium phosphate, 0.87% Sodium chloride, pH 7.3, 30% glycerol, and 0.09% (W/V) sodium azide.

Storage

Store at -20 °C. Stable for 12 months from date of receipt

Anti-CBX6 Antibody - Protein Information**Name** CBX6**Function**

Component of a Polycomb group (PcG) multiprotein PRC1-like complex, a complex class required to maintain the transcriptionally repressive state of many genes, including Hox genes, throughout development (PubMed:21282530). PcG PRC1 complex acts via chromatin remodeling and modification of histones; it mediates monoubiquitination of histone H2A 'Lys-119', rendering chromatin heritably changed in its expressibility. Possibly contributes to the target selectivity of the PRC1 complex by binding specific regions of chromatin (PubMed:18927235). Recruitment

to chromatin might occur in an H3K27me3- independent fashion (By similarity). May have a PRC1-independent function in embryonic stem cells (By similarity).

Cellular Location

Nucleus. Chromosome. Note=Uniformly distributed in the nucleoplasm (PubMed:18927235).

Localizes to the inactivated X chromosome in females (By similarity).

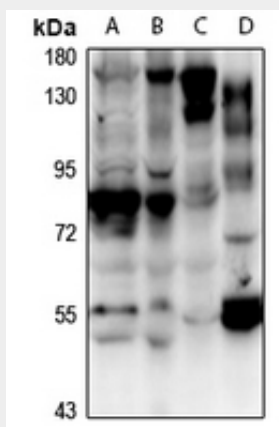
{ECO:0000250|UniProtKB:Q9DBY5, ECO:0000269|PubMed:18927235}

Anti-CBX6 Antibody - Protocols

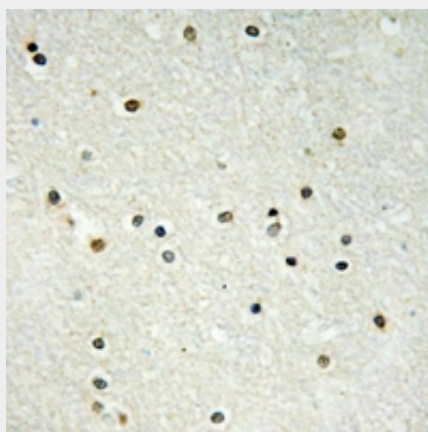
Provided below are standard protocols that you may find useful for product applications.

- [Western Blot](#)
- [Blocking Peptides](#)
- [Dot Blot](#)
- [Immunohistochemistry](#)
- [Immunofluorescence](#)
- [Immunoprecipitation](#)
- [Flow Cytometry](#)
- [Cell Culture](#)

Anti-CBX6 Antibody - Images



Western blot analysis of CBX6 expression in HEK293T (A), HCT116 (B), mouse testis (C), rat kidney (D) whole cell lysates.



Immunohistochemical analysis of CBX6 staining in human brain formalin fixed paraffin embedded tissue section. The section was pre-treated using heat mediated antigen retrieval with sodium citrate buffer (pH 6.0). The section was then incubated with the antibody at room temperature and detected using an HRP conjugated compact polymer system. DAB was used as the chromogen. The section was then counterstained with haematoxylin and mounted with DPX.

Anti-CBX6 Antibody - Background

KLH-conjugated synthetic peptide encompassing a sequence within the N-term region of human CBX6. The exact sequence is proprietary.