

Anti-ZNF23 Antibody
Rabbit polyclonal antibody to ZNF23
Catalog # AP61304**Specification**

Anti-ZNF23 Antibody - Product Information

Application	WB, IF/IC, IHC
Primary Accession	P17027
Reactivity	Human, Mouse, Rat
Host	Rabbit
Clonality	Polyclonal
Calculated MW	73059

Anti-ZNF23 Antibody - Additional Information**Gene ID** 7571**Other Names**KOX16; ZNF359; ZNF612; Zinc finger protein 23; Zinc finger protein 359; Zinc finger protein 612;
Zinc finger protein KOX16**Target/Specificity**

KLH-conjugated synthetic peptide encompassing a sequence within the center region of human ZNF23. The exact sequence is proprietary.

Dilution

WB~~WB (1/500 - 1/1000), IH (1/50 - 1/200), IF/IC (1/100 - 1/500)

IF/IC~~N/A

IHC~~1:100~500

Format

Liquid in 0.42% Potassium phosphate, 0.87% Sodium chloride, pH 7.3, 30% glycerol, and 0.09% (W/V) sodium azide.

Storage

Store at -20 °C. Stable for 12 months from date of receipt

Anti-ZNF23 Antibody - Protein Information**Name** ZNF23**Synonyms** KOX16, ZNF359, ZNF612**Function**

May be involved in transcriptional regulation. May have a role in embryonic development.

Cellular Location

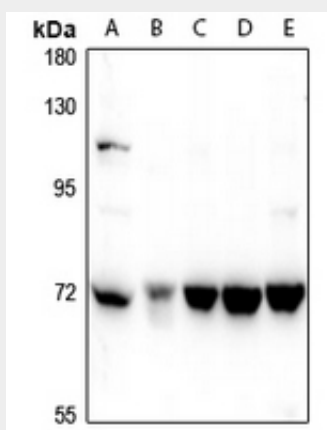
Nucleus.

Anti-ZNF23 Antibody - Protocols

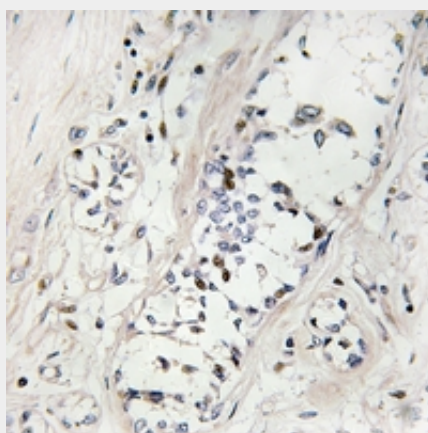
Provided below are standard protocols that you may find useful for product applications.

- [Western Blot](#)
- [Blocking Peptides](#)
- [Dot Blot](#)
- [Immunohistochemistry](#)
- [Immunofluorescence](#)
- [Immunoprecipitation](#)
- [Flow Cytometry](#)
- [Cell Culture](#)

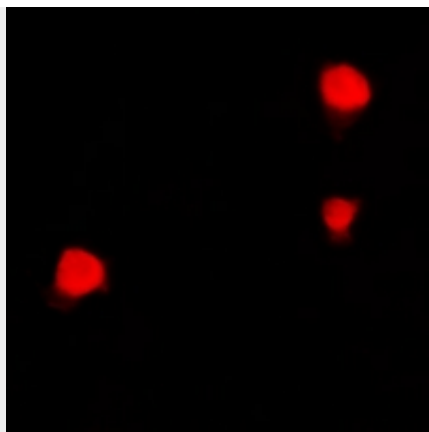
Anti-ZNF23 Antibody - Images



Western blot analysis of ZNF23 expression in MEF (A), C6 (B), A549 (C), A375 (D), A2780 (E) whole cell lysates.



Immunohistochemical analysis of ZNF23 staining in human breast cancer formalin fixed paraffin embedded tissue section. The section was pre-treated using heat mediated antigen retrieval with sodium citrate buffer (pH 6.0). The section was then incubated with the antibody at room temperature and detected using an HRP conjugated compact polymer system. DAB was used as the chromogen. The section was then counterstained with haematoxylin and mounted with DPX.



Immunofluorescent analysis of ZNF23 staining in HepG2 cells. Formalin-fixed cells were permeabilized with 0.1% Triton X-100 in TBS for 5-10 minutes and blocked with 3% BSA-PBS for 30 minutes at room temperature. Cells were probed with the primary antibody in 3% BSA-PBS and incubated overnight at 4 °C in a humidified chamber. Cells were washed with PBST and incubated with a Alexa Fluor 594-conjugated secondary antibody (red) in PBS at room temperature in the dark.

Anti-ZNF23 Antibody - Background

KLH-conjugated synthetic peptide encompassing a sequence within the center region of human ZNF23. The exact sequence is proprietary.