

**Anti-Alpha-2B Adrenergic Receptor Antibody**  
**Rabbit polyclonal antibody to Alpha-2B Adrenergic Receptor**  
**Catalog # AP61305****Specification**

---

**Anti-Alpha-2B Adrenergic Receptor Antibody - Product Information**

Application	WB, IF/IC
Primary Accession	<a href="#">P18089</a>
Reactivity	Human, Rat
Host	Rabbit
Clonality	Polyclonal
Calculated MW	49954

**Anti-Alpha-2B Adrenergic Receptor Antibody - Additional Information****Gene ID** 151**Other Names**

ADRA2L1; ADRA2RL1; Alpha-2B adrenergic receptor; Alpha-2 adrenergic receptor subtype C2; Alpha-2B adrenoreceptor; Alpha-2B adrenoceptor; Alpha-2BAR

**Target/Specificity**

KLH-conjugated synthetic peptide encompassing a sequence within the center region of human Alpha-2B Adrenergic Receptor. The exact sequence is proprietary.

**Dilution**WB~~WB (1/500 - 1/1000), IF/IC (1/100 - 1/500)  
IF/IC~~N/A**Format**

Liquid in 0.42% Potassium phosphate, 0.87% Sodium chloride, pH 7.3, 30% glycerol, and 0.09% (W/V) sodium azide.

**Storage**

Store at -20 °C. Stable for 12 months from date of receipt

**Anti-Alpha-2B Adrenergic Receptor Antibody - Protein Information****Name** ADRA2B**Synonyms** ADRA2L1, ADRA2RL1**Function**

Alpha-2 adrenergic receptors mediate the catecholamine- induced inhibition of adenylate cyclase through the action of G proteins. The rank order of potency for agonists of this receptor is clonidine &gt; norepinephrine &gt; epinephrine = oxymetazoline &gt; dopamine &gt; p-tyramine = phenylephrine &gt; serotonin &gt; p-synephrine / p-octopamine. For antagonists, the rank order is yohimbine &gt; chlorpromazine &gt; phentolamine &gt; mianserine &gt; spiperone &gt; prazosin &gt; alprenolol &gt;

propanolol > pindolol.

#### Cellular Location

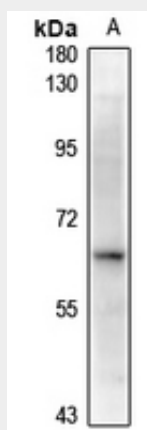
Cell membrane; Multi-pass membrane protein. Note=Interaction with RAB26, GGA1, GGA2 and GGA3 mediates transport from the Golgi to the cell membrane.

### Anti-Alpha-2B Adrenergic Receptor Antibody - Protocols

Provided below are standard protocols that you may find useful for product applications.

- [Western Blot](#)
- [Blocking Peptides](#)
- [Dot Blot](#)
- [Immunohistochemistry](#)
- [Immunofluorescence](#)
- [Immunoprecipitation](#)
- [Flow Cytometry](#)
- [Cell Culture](#)

### Anti-Alpha-2B Adrenergic Receptor Antibody - Images



Western blot analysis of Alpha-2B Adrenergic Receptor expression in HeLa (A) whole cell lysates.



Immunofluorescent analysis of Alpha-2B Adrenergic Receptor staining in HepG2 cells. Formalin-fixed cells were permeabilized with 0.1% Triton X-100 in TBS for 5-10 minutes and blocked with 3% BSA-PBS for 30 minutes at room temperature. Cells were probed with the

primary antibody in 3% BSA-PBS and incubated overnight at 4 °C in a humidified chamber. Cells were washed with PBST and incubated with a Alexa Fluor 594-conjugated secondary antibody (red) in PBS at room temperature in the dark.

**Anti-Alpha-2B Adrenergic Receptor Antibody - Background**

KLH-conjugated synthetic peptide encompassing a sequence within the center region of human Alpha-2B Adrenergic Receptor. The exact sequence is proprietary.