

Anti-CAF-I p60 Antibody
Rabbit polyclonal antibody to CAF-I p60
Catalog # AP61309**Specification**

Anti-CAF-I p60 Antibody - Product Information

Application	WB, IF/IC, IHC
Primary Accession	Q13112
Reactivity	Human, Monkey
Host	Rabbit
Clonality	Polyclonal
Calculated MW	61493

Anti-CAF-I p60 Antibody - Additional Information**Gene ID** 8208**Other Names**

CAF1A; CAF1P60; MPHOSPH7; MPP7; Chromatin assembly factor 1 subunit B; CAF-1 subunit B; Chromatin assembly factor I p60 subunit; CAF-I 60 kDa subunit; CAF-I p60; M-phase phosphoprotein 7

Target/Specificity

Recognizes endogenous levels of CAF-I p60 protein.

Dilution

WB~~WB (1/500 - 1/1000), IH (1/50 - 1/200), IF/IC (1/100 - 1/500)

IF/IC~~N/A

IHC~~1:100~500

Format

Liquid in 0.42% Potassium phosphate, 0.87% Sodium chloride, pH 7.3, 30% glycerol, and 0.09% (W/V) sodium azide.

Storage

Store at -20 °C. Stable for 12 months from date of receipt

Anti-CAF-I p60 Antibody - Protein Information**Name** CHAF1B ([HGNC:1911](#))**Function**

Acts as a component of the histone chaperone complex chromatin assembly factor 1 (CAF-1), which assembles histone octamers onto DNA during replication and repair. CAF-1 performs the first step of the nucleosome assembly process, bringing newly synthesized histones H3 and H4 to replicating DNA; histones H2A/H2B can bind to this chromatin precursor subsequent to DNA replication to complete the histone octamer.

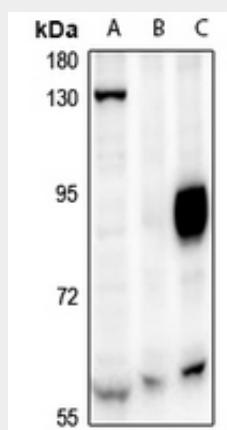
Cellular Location

Nucleus. Cytoplasm. Note=DNA replication foci. Cytoplasmic in M phase

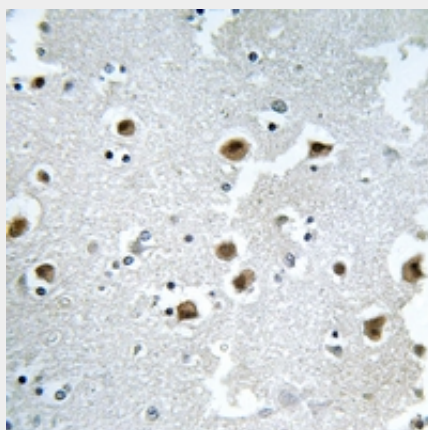
Anti-CAF-I p60 Antibody - Protocols

Provided below are standard protocols that you may find useful for product applications.

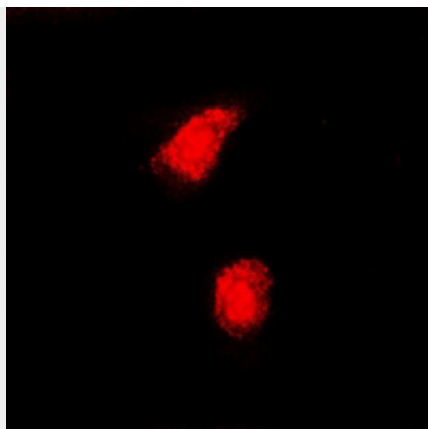
- [Western Blot](#)
- [Blocking Peptides](#)
- [Dot Blot](#)
- [Immunohistochemistry](#)
- [Immunofluorescence](#)
- [Immunoprecipitation](#)
- [Flow Cytometry](#)
- [Cell Culture](#)

Anti-CAF-I p60 Antibody - Images

Western blot analysis of CAF-I p60 expression in SHSY5Y (A), EC9706 (B), SGC7901 (C) whole cell lysates.



Immunohistochemical analysis of CAF-I p60 staining in human brain formalin fixed paraffin embedded tissue section. The section was pre-treated using heat mediated antigen retrieval with sodium citrate buffer (pH 6.0). The section was then incubated with the antibody at room temperature and detected using an HRP conjugated compact polymer system. DAB was used as the chromogen. The section was then counterstained with haematoxylin and mounted with DPX.



Immunofluorescent analysis of CAF-I p60 staining in LOVO cells. Formalin-fixed cells were permeabilized with 0.1% Triton X-100 in TBS for 5-10 minutes and blocked with 3% BSA-PBS for 30 minutes at room temperature. Cells were probed with the primary antibody in 3% BSA-PBS and incubated overnight at 4 °C in a humidified chamber. Cells were washed with PBST and incubated with a Alexa Fluor 594-conjugated secondary antibody (red) in PBS at room temperature in the dark.

Anti-CAF-I p60 Antibody - Background

KLH-conjugated synthetic peptide encompassing a sequence within the center region of human CAF-I p60. The exact sequence is proprietary.