

CDX1 Antibody (C-term)
Purified Rabbit Polyclonal Antibody (Pab)
Catalog # AP6130a**Specification**

CDX1 Antibody (C-term) - Product Information

Application	WB, IHC-P,E
Primary Accession	P47902
Reactivity	Human
Host	Rabbit
Clonality	Polyclonal
Isotype	Rabbit IgG
Antigen Region	236-265

CDX1 Antibody (C-term) - Additional Information**Gene ID** 1044**Other Names**

Homeobox protein CDX-1, Caudal-type homeobox protein 1, CDX1

Target/Specificity

This CDX1 antibody is generated from rabbits immunized with a KLH conjugated synthetic peptide between 236-265 amino acids from the C-terminal region of human CDX1.

Dilution

WB~~1:1000

IHC-P~~1:50~100

E~~Use at an assay dependent concentration.

Format

Purified polyclonal antibody supplied in PBS with 0.09% (W/V) sodium azide. This antibody is prepared by Saturated Ammonium Sulfate (SAS) precipitation followed by dialysis against PBS.

Storage

Maintain refrigerated at 2-8°C for up to 2 weeks. For long term storage store at -20°C in small aliquots to prevent freeze-thaw cycles.

Precautions

CDX1 Antibody (C-term) is for research use only and not for use in diagnostic or therapeutic procedures.

CDX1 Antibody (C-term) - Protein Information**Name** CDX1

Function Plays a role in transcriptional regulation (PubMed:[24623306](#)). Involved in activated KRAS-mediated transcriptional activation of PRKD1 in colorectal cancer (CRC) cells

(PubMed:[24623306](#)). Binds to the PRKD1 promoter in colorectal cancer (CRC) cells
(PubMed:[24623306](#)). Could play a role in the terminal differentiation of the intestine. Binds preferentially to methylated DNA (PubMed:[28473536](#)).

Cellular Location

Nucleus.

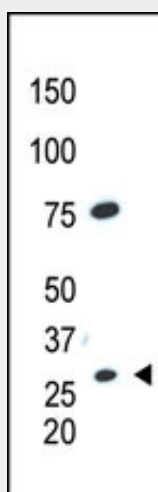
Tissue Location

Intestinal epithelium.

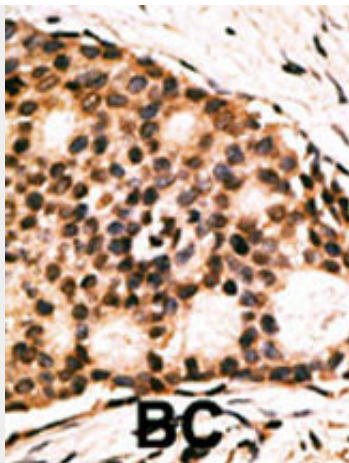
CDX1 Antibody (C-term) - Protocols

Provided below are standard protocols that you may find useful for product applications.

- [Western Blot](#)
- [Blocking Peptides](#)
- [Dot Blot](#)
- [Immunohistochemistry](#)
- [Immunofluorescence](#)
- [Immunoprecipitation](#)
- [Flow Cytometry](#)
- [Cell Culture](#)

CDX1 Antibody (C-term) - Images

The anti-CDX1 C-term Pab (Cat. #AP6130a) is used in Western blot to detect CDX1 in HL60 cell lysate.



Formalin-fixed and paraffin-embedded human cancer tissue reacted with the primary antibody, which was peroxidase-conjugated to the secondary antibody, followed by AEC staining. This data demonstrates the use of this antibody for immunohistochemistry; clinical relevance has not been evaluated. BC = breast carcinoma; HC = hepatocarcinoma.

CDX1 Antibody (C-term) - Background

This gene is a member of the caudal-related homeobox transcription factor gene family. The encoded DNA-binding protein regulates intestine-specific gene expression and enterocyte differentiation. It has been shown to induce expression of the intestinal alkaline phosphatase gene, and inhibit beta-catenin/T-cell factor transcriptional activity.

CDX1 Antibody (C-term) - References

Domon-Dell, C., et al., *Oncogene* 22(39):7913-7921 (2003).
Suh, E.R., et al., *J. Biol. Chem.* 277(39):35795-35800 (2002).
Mizoshita, T., et al., *Gastric Cancer* 4(4):185-191 (2001).
Mallo, G.V., et al., *Int. J. Cancer* 74(1):35-44 (1997).
Bonner, C.A., et al., *Genomics* 28(2):206-211 (1995).

CDX1 Antibody (C-term) - Citations

- [Functional Significance of MMP3 and TIMP2 Polymorphisms in Cleft Lip/Palate.](#)