

Anti-HLX Antibody
Rabbit polyclonal antibody to HLX
Catalog # AP61310**Specification**

Anti-HLX Antibody - Product Information

Application	WB, IF/IC, IHC
Primary Accession	Q14774
Other Accession	Q61670
Reactivity	Human, Mouse, Rat, Bovine
Host	Rabbit
Clonality	Polyclonal
Calculated MW	50789

Anti-HLX Antibody - Additional Information**Gene ID** 3142**Other Names**

HLX1; H2.0-like homeobox protein; Homeobox protein HB24; Homeobox protein HLX1

Target/Specificity

Recognizes endogenous levels of HLX protein.

Dilution

WB~~WB (1/500 - 1/1000), IH (1/50 - 1/200), IF/IC (1/100 - 1/500)

IF/IC~~N/A

IHC~~1:100~500

Format

Liquid in 0.42% Potassium phosphate, 0.87% Sodium chloride, pH 7.3, 30% glycerol, and 0.09% (W/V) sodium azide.

Storage

Store at -20 °C. Stable for 12 months from date of receipt

Anti-HLX Antibody - Protein Information**Name** HLX**Synonyms** HLX1**Function**

Transcription factor required for TBX21/T-bet-dependent maturation of Th1 cells as well as maintenance of Th1-specific gene expression. Involved in embryogenesis and hematopoiesis (By similarity).

Cellular Location

Nucleus {ECO:0000255|PROSITE-ProRule:PRU00108}.

Tissue Location

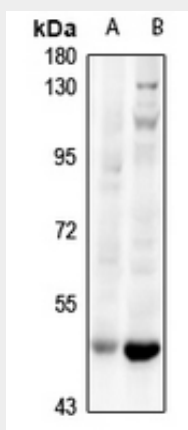
Low level in normal B and T-cells, high level in activated lymphocytes and monocytes. Also found in thymus, tonsil, bone marrow, developing vessels, and fetal brain

Anti-HLX Antibody - Protocols

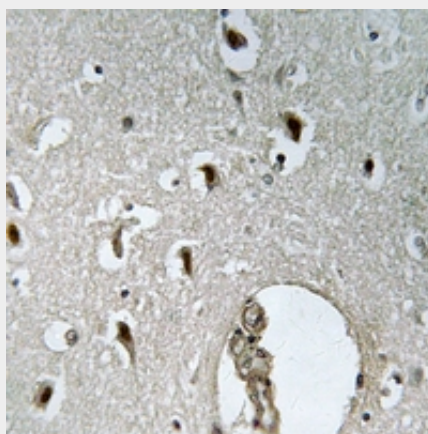
Provided below are standard protocols that you may find useful for product applications.

- [Western Blot](#)
- [Blocking Peptides](#)
- [Dot Blot](#)
- [Immunohistochemistry](#)
- [Immunofluorescence](#)
- [Immunoprecipitation](#)
- [Flow Cytometry](#)
- [Cell Culture](#)

Anti-HLX Antibody - Images

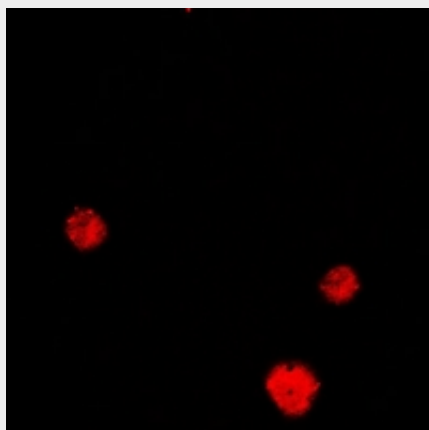


Western blot analysis of HLX expression in C6 (A), mouse brain (B) whole cell lysates.



Immunohistochemical analysis of HLX staining in human brain formalin fixed paraffin embedded tissue section. The section was pre-treated using heat mediated antigen retrieval with sodium citrate buffer (pH 6.0). The section was then incubated with the antibody at room temperature

and detected using an HRP conjugated compact polymer system. DAB was used as the chromogen. The section was then counterstained with haematoxylin and mounted with DPX.



Immunofluorescent analysis of HLX staining in MCF7 cells. Formalin-fixed cells were permeabilized with 0.1% Triton X-100 in TBS for 5-10 minutes and blocked with 3% BSA-PBS for 30 minutes at room temperature. Cells were probed with the primary antibody in 3% BSA-PBS and incubated overnight at 4 °C in a humidified chamber. Cells were washed with PBST and incubated with a Alexa Fluor 594-conjugated secondary antibody (red) in PBS at room temperature in the dark.

Anti-HLX Antibody - Background

KLH-conjugated synthetic peptide encompassing a sequence within the C-term region of human HLX. The exact sequence is proprietary.