

Anti-MEKK15 Antibody
Rabbit polyclonal antibody to MEKK15
Catalog # AP61312**Specification**

Anti-MEKK15 Antibody - Product Information

Application	WB
Primary Accession	O6ZN16
Other Accession	A2AOW0
Reactivity	Human, Mouse, Rat
Host	Rabbit
Clonality	Polyclonal
Calculated MW	147437

Anti-MEKK15 Antibody - Additional Information**Gene ID** 389840**Other Names**

ASK3; Mitogen-activated protein kinase kinase kinase 15; Apoptosis signal-regulating kinase 3; MAPK/ERK kinase kinase 15; MEK kinase 15; MEKK 15

Target/Specificity

KLH-conjugated synthetic peptide encompassing a sequence within the C-term region of human MEKK15. The exact sequence is proprietary.

Dilution

WB~~WB (1/500 - 1/1000)

Format

Liquid in 0.42% Potassium phosphate, 0.87% Sodium chloride, pH 7.3, 30% glycerol, and 0.09% (W/V) sodium azide.

Storage

Store at -20 °C. Stable for 12 months from date of receipt

Anti-MEKK15 Antibody - Protein Information**Name** MAP3K15**Synonyms** ASK3**Function**

Serine/threonine kinase which acts as a component of the MAP kinase signal transduction pathway (PubMed:20362554, PubMed:26732173). Once activated, acts as an upstream activator of the p38 MAPK signal transduction cascade through the phosphorylation and activation of several MAP kinase kinases (PubMed:20362554, PubMed:26732173). May function in a signal transduction pathway that is activated by various cell stresses and leads to apoptosis (PubMed:20362554). Involved in phosphorylation of WNK4 in response to osmotic stress or hypotonic low- chloride stimulation via the p38 MAPK signal transduction cascade (PubMed:26732173).

Tissue Location

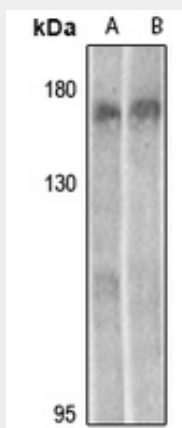
Isoform 2 and isoform 3 are widely expressed. Isoform 2 highest levels are observed in fetal brain, and isoform 3 highest levels in pancreas, peripheral blood leukocytes, fetal brain and spleen.

Anti-MEKK15 Antibody - Protocols

Provided below are standard protocols that you may find useful for product applications.

- [Western Blot](#)
- [Blocking Peptides](#)
- [Dot Blot](#)
- [Immunohistochemistry](#)
- [Immunofluorescence](#)
- [Immunoprecipitation](#)
- [Flow Cytometry](#)
- [Cell Culture](#)

Anti-MEKK15 Antibody - Images



Western blot analysis of MEKK15 expression in C6 (A), BV2 (B) whole cell lysates.

Anti-MEKK15 Antibody - Background

KLH-conjugated synthetic peptide encompassing a sequence within the C-term region of human MEKK15. The exact sequence is proprietary.