

Anti-DUSP19 Antibody
Rabbit polyclonal antibody to DUSP19
Catalog # AP61313**Specification**

Anti-DUSP19 Antibody - Product Information

Application	WB, IF/IC
Primary Accession	Q8WTR2
Reactivity	Human, Monkey
Host	Rabbit
Clonality	Polyclonal
Calculated MW	24194

Anti-DUSP19 Antibody - Additional Information**Gene ID** 142679**Other Names**

DUSP17; LMWDSP3; SKRP1; Dual specificity protein phosphatase 19; Dual specificity phosphatase TS-DSP1; Low molecular weight dual specificity phosphatase 3; LMW-DSP3; Protein phosphatase SKRP1; Stress-activated protein kinase pathway-regulating phosphatase 1; SAPK pathway-regulating phosphatase 1

Target/Specificity

Recognizes endogenous levels of DUSP19 protein.

Dilution

WB~~WB (1/500 - 1/1000), IF/IC (1/100 - 1/500)
IF/IC~~N/A

Format

Liquid in 0.42% Potassium phosphate, 0.87% Sodium chloride, pH 7.3, 30% glycerol, and 0.09% (W/V) sodium azide.

Storage

Store at -20 °C. Stable for 12 months from date of receipt

Anti-DUSP19 Antibody - Protein Information**Name** DUSP19 ([HGNC:18894](#))**Synonyms** DUSP17, LMWDSP3, SKRP1**Function**

Has a dual specificity toward Ser/Thr and Tyr-containing proteins.

Tissue Location

Expressed in the heart, lung, liver, and pancreas. The expression level in the pancreas is the

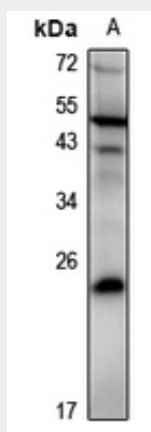
highest

Anti-DUSP19 Antibody - Protocols

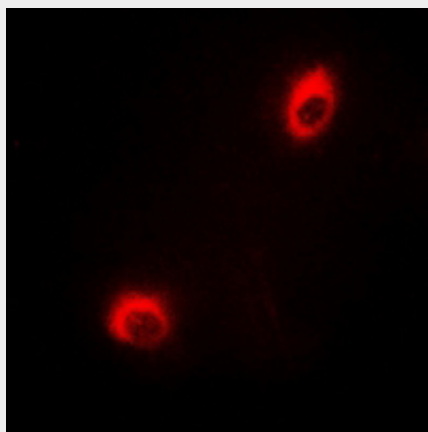
Provided below are standard protocols that you may find useful for product applications.

- [Western Blot](#)
- [Blocking Peptides](#)
- [Dot Blot](#)
- [Immunohistochemistry](#)
- [Immunofluorescence](#)
- [Immunoprecipitation](#)
- [Flow Cytometry](#)
- [Cell Culture](#)

Anti-DUSP19 Antibody - Images



Western blot analysis of DUSP19 expression in Panc1 (A) whole cell lysates.



Immunofluorescent analysis of DUSP19 staining in HeLa cells. Formalin-fixed cells were permeabilized with 0.1% Triton X-100 in TBS for 5-10 minutes and blocked with 3% BSA-PBS for 30 minutes at room temperature. Cells were probed with the primary antibody in 3% BSA-PBS and incubated overnight at 4 °C in a humidified chamber. Cells were washed with PBST and incubated with a Alexa Fluor 594-conjugated secondary antibody (red) in PBS at room temperature in the dark.

Anti-DUSP19 Antibody - Background

KLH-conjugated synthetic peptide encompassing a sequence within the center region of human DUSP19. The exact sequence is proprietary.