

Anti-HPK1 Antibody
Rabbit polyclonal antibody to HPK1
Catalog # AP61314**Specification**

Anti-HPK1 Antibody - Product Information

Application	WB
Primary Accession	O92918
Other Accession	P70218
Reactivity	Human, Mouse, Monkey, Pig, Bovine, Dog
Host	Rabbit
Clonality	Polyclonal
Calculated MW	91296

Anti-HPK1 Antibody - Additional Information**Gene ID** 11184**Other Names**

HPK1; Mitogen-activated protein kinase kinase kinase kinase 1; Hematopoietic progenitor kinase; MAPK/ERK kinase kinase kinase 1; MEK kinase kinase 1; MEKKK 1

Target/Specificity

Recognizes endogenous levels of HPK1 protein.

Dilution

WB~~WB (1/500 - 1/1000)

Format

Liquid in 0.42% Potassium phosphate, 0.87% Sodium chloride, pH 7.3, 30% glycerol, and 0.09% (W/V) sodium azide.

Storage

Store at -20 °C. Stable for 12 months from date of receipt

Anti-HPK1 Antibody - Protein Information**Name** MAP4K1 ([HGNC:6863](#))**Synonyms** HPK1**Function**

Serine/threonine-protein kinase, which plays a role in the response to environmental stress (PubMed:24362026). Appears to act upstream of the JUN N-terminal pathway (PubMed:8824585). Activator of the Hippo signaling pathway which plays a pivotal role in organ size control and tumor suppression by restricting proliferation and promoting apoptosis. MAP4Ks act in parallel to and are partially

redundant with STK3/MST2 and STK4/MST2 in the phosphorylation and activation of LATS1/2, and establish MAP4Ks as components of the expanded Hippo pathway (PubMed:26437443). May play a role in hematopoietic lineage decisions and growth regulation (PubMed:24362026, PubMed:8824585). Together with CLNK, it enhances CD3-triggered activation of T-cells and subsequent IL2 production (By similarity).

Tissue Location

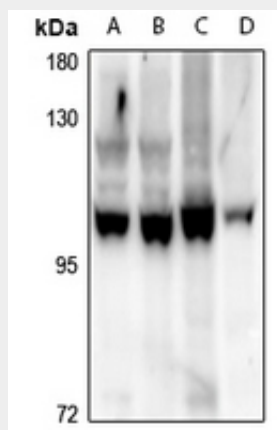
Expressed primarily in hematopoietic organs, including bone marrow, spleen and thymus. Also expressed at very low levels in lung, kidney, mammary glands and small intestine

Anti-HPK1 Antibody - Protocols

Provided below are standard protocols that you may find useful for product applications.

- [Western Blot](#)
- [Blocking Peptides](#)
- [Dot Blot](#)
- [Immunohistochemistry](#)
- [Immunofluorescence](#)
- [Immunoprecipitation](#)
- [Flow Cytometry](#)
- [Cell Culture](#)

Anti-HPK1 Antibody - Images



Western blot analysis of HPK1 expression in A549 (A), Myla2059 (B), Jurkat (C), SP20 (D) whole cell lysates.

Anti-HPK1 Antibody - Background

KLH-conjugated synthetic peptide encompassing a sequence within the center region of human HPK1. The exact sequence is proprietary.