

Anti-DLX4 Antibody
Rabbit polyclonal antibody to DLX4
Catalog # AP61315**Specification**

Anti-DLX4 Antibody - Product Information

Application	WB, IF/IC, IHC
Primary Accession	Q92988
Other Accession	P70436
Reactivity	Human, Mouse, Rat
Host	Rabbit
Clonality	Polyclonal
Calculated MW	26263

Anti-DLX4 Antibody - Additional Information**Gene ID** 1748**Other Names**BP1; DLX7; DLX8; DLX9; Homeobox protein DLX-4; Beta protein 1; Homeobox protein DLX-7;
Homeobox protein DLX-8**Target/Specificity**

Recognizes endogenous levels of DLX4 protein.

Dilution

WB~~WB (1/500 - 1/1000), IH (1/50 - 1/200), IF/IC (1/100 - 1/500)

IF/IC~~N/A

IHC~~1:100~500

Format

Liquid in 0.42% Potassium phosphate, 0.87% Sodium chloride, pH 7.3, 30% glycerol, and 0.09% (W/V) sodium azide.

Storage

Store at -20 °C.Stable for 12 months from date of receipt

Anti-DLX4 Antibody - Protein Information**Name** DLX4**Synonyms** BP1, DLX7, DLX8, DLX9**Function**

May play a role in determining the production of hemoglobin S. May act as a repressor. During embryonic development, plays a role in palatogenesis.

Cellular Location

Nucleus.

Tissue Location

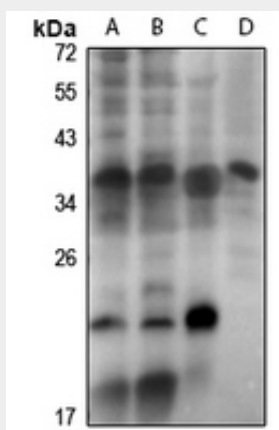
Expressed in leukemia cells and placenta. Also expressed in kidney and fetal liver.

Anti-DLX4 Antibody - Protocols

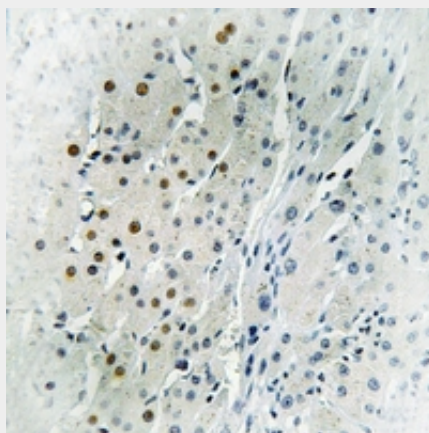
Provided below are standard protocols that you may find useful for product applications.

- [Western Blot](#)
- [Blocking Peptides](#)
- [Dot Blot](#)
- [Immunohistochemistry](#)
- [Immunofluorescence](#)
- [Immunoprecipitation](#)
- [Flow Cytometry](#)
- [Cell Culture](#)

Anti-DLX4 Antibody - Images

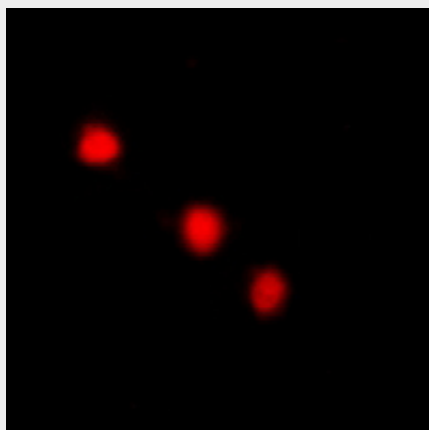


Western blot analysis of DLX4 expression in Jurkat (A), HEK293T (B), mouse embryo (C), rat kidney (D) whole cell lysates.



Immunohistochemical analysis of DLX4 staining in human liver cancer formalin fixed paraffin embedded tissue section. The section was pre-treated using heat mediated antigen retrieval with sodium citrate buffer (pH 6.0). The section was then incubated with the antibody at room

temperature and detected using an HRP conjugated compact polymer system. DAB was used as the chromogen. The section was then counterstained with haematoxylin and mounted with DPX.



Immunofluorescent analysis of DLX4 staining in LOVO cells. Formalin-fixed cells were permeabilized with 0.1% Triton X-100 in TBS for 5-10 minutes and blocked with 3% BSA-PBS for 30 minutes at room temperature. Cells were probed with the primary antibody in 3% BSA-PBS and incubated overnight at 4 °C in a humidified chamber. Cells were washed with PBST and incubated with a Alexa Fluor 594-conjugated secondary antibody (red) in PBS at room temperature in the dark.

Anti-DLX4 Antibody - Background

KLH-conjugated synthetic peptide encompassing a sequence within the center region of human DLX4. The exact sequence is proprietary.