

Anti-BWR1A Antibody
Rabbit polyclonal antibody to BWR1A
Catalog # AP61316**Specification**

Anti-BWR1A Antibody - Product Information

Application	WB, IF/IC
Primary Accession	O96BI1
Other Accession	Q78KK3
Reactivity	Human, Mouse, Rat, Monkey
Host	Rabbit
Clonality	Polyclonal
Calculated MW	44846

Anti-BWR1A Antibody - Additional Information**Gene ID** 5002**Other Names**

BWR1A; BWSCR1A; HET; IMPT1; ITM; ORCTL2; SLC22A1L; TSSC5; Solute carrier family 22 member 18; Beckwith-Wiedemann syndrome chromosomal region 1 candidate gene A protein; Efflux transporter-like protein; Imprinted multi-membrane-spanning polyspecific transporter-related protein 1; Organic cation transporter-like protein 2; ORCTL-2; Solute carrier family 22 member 1-like; Tumor-suppressing STF cDNA 5 protein; Tumor-suppressing subchromosomal transferable fragment candidate gene 5 protein; p45-Beckwith-Wiedemann region 1 A; p45-BWR1A

Target/Specificity

KLH-conjugated synthetic peptide encompassing a sequence within the C-term region of human BWR1A. The exact sequence is proprietary.

Dilution

WB~~WB (1/500 - 1/1000), IF/IC (1/100 - 1/500)
IF/IC~~N/A

Format

Liquid in 0.42% Potassium phosphate, 0.87% Sodium chloride, pH 7.3, 30% glycerol, and 0.09% (W/V) sodium azide.

Storage

Store at -20 °C. Stable for 12 months from date of receipt

Anti-BWR1A Antibody - Protein Information**Name** SLC67A1 ([HGNC:10964](#))**Function**

May act as a transporter of organic cations based on a proton efflux antiport mechanism. May play a role in the transport of chloroquine and quinidine-related compounds in kidney (PubMed:9744804). Plays a role in the regulation of lipid metabolism (By similarity).

Cellular Location

Apical cell membrane; Multi-pass membrane protein. Note=Localized at the apical membrane surface of renal proximal tubules.

Tissue Location

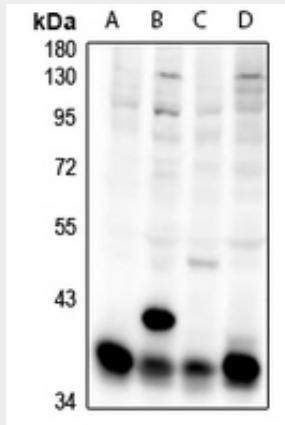
Expressed at high levels in adult and fetal kidney and liver, and adult colon. Expressed in fetal renal proximal tubules (at protein level). Expressed at lower levels in heart, brain and lung

Anti-BWR1A Antibody - Protocols

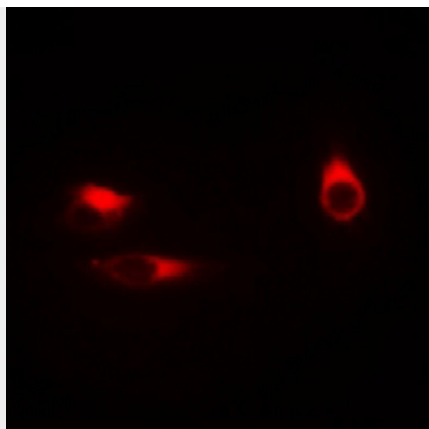
Provided below are standard protocols that you may find useful for product applications.

- [Western Blot](#)
- [Blocking Peptides](#)
- [Dot Blot](#)
- [Immunohistochemistry](#)
- [Immunofluorescence](#)
- [Immunoprecipitation](#)
- [Flow Cytometry](#)
- [Cell Culture](#)

Anti-BWR1A Antibody - Images



Western blot analysis of BWR1A expression in C6 (A), CT26 (B), HeLa (C), A2780 (D) whole cell lysates.



Immunofluorescent analysis of BWR1A staining in HeLa cells. Formalin-fixed cells were permeabilized with 0.1% Triton X-100 in TBS for 5-10 minutes and blocked with 3% BSA-PBS for 30 minutes at room temperature. Cells were probed with the primary antibody in 3% BSA-PBS and incubated overnight at 4 °C in a humidified chamber. Cells were washed with PBST and incubated with a Alexa Fluor 594-conjugated secondary antibody (red) in PBS at room temperature in the dark.

Anti-BWR1A Antibody - Background

KLH-conjugated synthetic peptide encompassing a sequence within the C-term region of human BWR1A. The exact sequence is proprietary.