

**Anti-ILKAP Antibody**  
**Rabbit polyclonal antibody to ILKAP**  
**Catalog # AP61317****Specification**

---

**Anti-ILKAP Antibody - Product Information**

Application	WB, IF/IC, IHC
Primary Accession	<a href="#">Q9H0C8</a>
Reactivity	Human, Monkey
Host	Rabbit
Clonality	Polyclonal
Calculated MW	42907

**Anti-ILKAP Antibody - Additional Information****Gene ID** 80895**Other Names**

Integrin-linked kinase-associated serine/threonine phosphatase 2C; ILKAP

**Target/Specificity**

KLH-conjugated synthetic peptide encompassing a sequence within the center region of human ILKAP. The exact sequence is proprietary.

**Dilution**

WB~~WB (1/500 - 1/1000), IH (1/50 - 1/200), IF/IC (1/100 - 1/500)

IF/IC~~N/A

IHC~~1:100~500

**Format**

Liquid in 0.42% Potassium phosphate, 0.87% Sodium chloride, pH 7.3, 30% glycerol, and 0.09% (W/V) sodium azide.

**Storage**

Store at -20 °C. Stable for 12 months from date of receipt

**Anti-ILKAP Antibody - Protein Information****Name** ILKAP**Function**

Protein phosphatase that may play a role in regulation of cell cycle progression via dephosphorylation of its substrates whose appropriate phosphorylation states might be crucial for cell proliferation. Selectively associates with integrin linked kinase (ILK), to modulate cell adhesion and growth factor signaling. Inhibits the ILK-GSK3B signaling axis and may play an important role in inhibiting oncogenic transformation.

**Cellular Location**

Cytoplasm.

#### Tissue Location

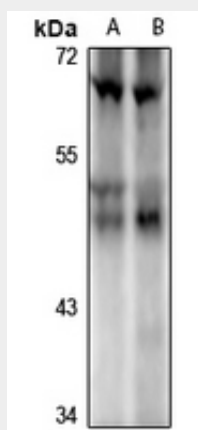
Widely expressed. Highest levels expressed in striated muscle. Much lower levels evident in various smooth muscle tissues.

#### Anti-ILKAP Antibody - Protocols

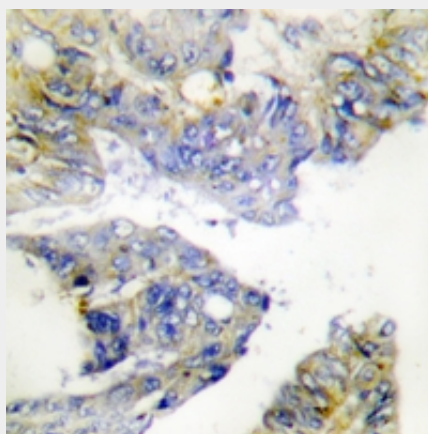
Provided below are standard protocols that you may find useful for product applications.

- [Western Blot](#)
- [Blocking Peptides](#)
- [Dot Blot](#)
- [Immunohistochemistry](#)
- [Immunofluorescence](#)
- [Immunoprecipitation](#)
- [Flow Cytometry](#)
- [Cell Culture](#)

#### Anti-ILKAP Antibody - Images

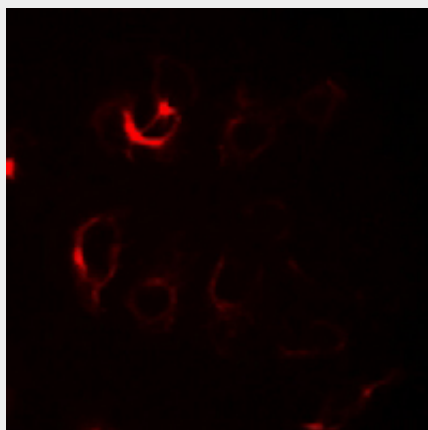


Western blot analysis of ILKAP expression in SGC7901 (A), A549 (B) whole cell lysates.



Immunohistochemical analysis of ILKAP staining in human colon cancer formalin fixed paraffin embedded tissue section. The section was pre-treated using heat mediated antigen retrieval with sodium citrate buffer (pH 6.0). The section was then incubated with the antibody at room

temperature and detected using an HRP conjugated compact polymer system. DAB was used as the chromogen. The section was then counterstained with haematoxylin and mounted with DPX.



Immunofluorescent analysis of ILKAP staining in COS7 cells. Formalin-fixed cells were permeabilized with 0.1% Triton X-100 in TBS for 5-10 minutes and blocked with 3% BSA-PBS for 30 minutes at room temperature. Cells were probed with the primary antibody in 3% BSA-PBS and incubated overnight at 4 °C in a humidified chamber. Cells were washed with PBST and incubated with a Alexa Fluor 594-conjugated secondary antibody (red) in PBS at room temperature in the dark.

#### **Anti-ILKAP Antibody - Background**

KLH-conjugated synthetic peptide encompassing a sequence within the center region of human ILKAP. The exact sequence is proprietary.