

Anti-RBPJL Antibody
Rabbit polyclonal antibody to RBPJL
Catalog # AP61318

Specification

Anti-RBPJL Antibody - Product Information

Application	WB
Primary Accession	O9UBG7
Other Accession	O08674
Reactivity	Human, Mouse, Rat
Host	Rabbit
Clonality	Polyclonal
Calculated MW	56751

Anti-RBPJL Antibody - Additional Information

Gene ID 11317

Other Names

RBPL; RBPSUHL; Recombining binding protein suppressor of hairless-like protein; Transcription factor RBP-L

Target/Specificity

KLH-conjugated synthetic peptide encompassing a sequence within the center region of human RBPJL. The exact sequence is proprietary.

Dilution

WB~~WB (1/500 - 1/1000)

Format

Liquid in 0.42% Potassium phosphate, 0.87% Sodium chloride, pH 7.3, 30% glycerol, and 0.09% (W/V) sodium azide.

Storage

Store at -20 °C. Stable for 12 months from date of receipt

Anti-RBPJL Antibody - Protein Information

Name RBPJL

Synonyms RBPL, RBPSUHL

Function

Putative transcription factor, which cooperates with EBNA2 to activate transcription.

Cellular Location

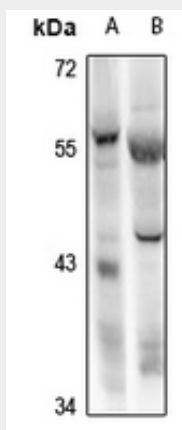
Nucleus.

Anti-RBPJL Antibody - Protocols

Provided below are standard protocols that you may find useful for product applications.

- [Western Blot](#)
- [Blocking Peptides](#)
- [Dot Blot](#)
- [Immunohistochemistry](#)
- [Immunofluorescence](#)
- [Immunoprecipitation](#)
- [Flow Cytometry](#)
- [Cell Culture](#)

Anti-RBPJL Antibody - Images



Western blot analysis of RBPJL expression in Myla2059 (A), mouse pancreas (B) whole cell lysates.

Anti-RBPJL Antibody - Background

KLH-conjugated synthetic peptide encompassing a sequence within the center region of human RBPJL. The exact sequence is proprietary.