

Anti-STON1 Antibody
Rabbit polyclonal antibody to STON1
Catalog # AP61319

Specification

Anti-STON1 Antibody - Product Information

Application	WB, IF/IC, IHC
Primary Accession	O9Y6Q2
Reactivity	Human
Host	Rabbit
Clonality	Polyclonal
Calculated MW	83141

Anti-STON1 Antibody - Additional Information

Gene ID 11037;286749

Other Names

SALF; SBLF; STN1; Stonin-1; Stoned B-like factor

Target/Specificity

KLH-conjugated synthetic peptide encompassing a sequence within the C-term region of human STON1. The exact sequence is proprietary.

Dilution

WB~~WB (1/500 - 1/1000), IH (1/50 - 1/200), IF/IC (1/100 - 1/500)
IF/IC~~N/A
IHC~~1:100~500

Format

Liquid in 0.42% Potassium phosphate, 0.87% Sodium chloride, pH 7.3, 30% glycerol, and 0.09% (W/V) sodium azide.

Storage

Store at -20 °C. Stable for 12 months from date of receipt

Anti-STON1 Antibody - Protein Information

Name STON1

Synonyms SALF, SBLF, STN1

Function

May be involved in the endocytic machinery.

Cellular Location

Cytoplasm. Membrane. Note=Some fraction is membrane- associated

Tissue Location

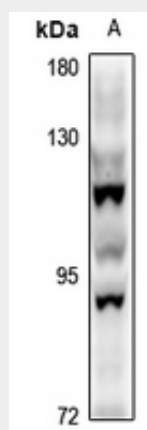
Ubiquitous..

Anti-STON1 Antibody - Protocols

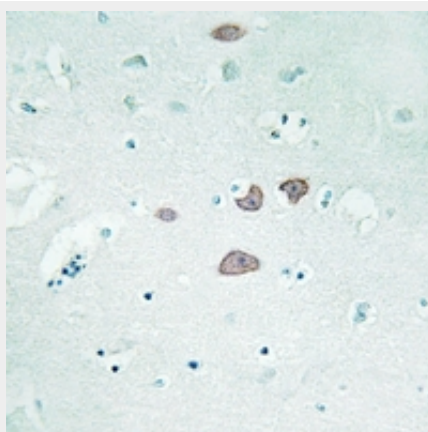
Provided below are standard protocols that you may find useful for product applications.

- [Western Blot](#)
- [Blocking Peptides](#)
- [Dot Blot](#)
- [Immunohistochemistry](#)
- [Immunofluorescence](#)
- [Immunoprecipitation](#)
- [Flow Cytometry](#)
- [Cell Culture](#)

Anti-STON1 Antibody - Images



Western blot analysis of STON1 expression in A549 (A) whole cell lysates.



Immunohistochemical analysis of STON1 staining in human brain formalin fixed paraffin embedded tissue section. The section was pre-treated using heat mediated antigen retrieval with sodium citrate buffer (pH 6.0). The section was then incubated with the antibody at room temperature and detected using an HRP conjugated compact polymer system. DAB was used as the chromogen. The section was then counterstained with haematoxylin and mounted with DPX.



Immunofluorescent analysis of STON1 staining in A549 cells. Formalin-fixed cells were permeabilized with 0.1% Triton X-100 in TBS for 5-10 minutes and blocked with 3% BSA-PBS for 30 minutes at room temperature. Cells were probed with the primary antibody in 3% BSA-PBS and incubated overnight at 4 °C in a humidified chamber. Cells were washed with PBST and incubated with a Alexa Fluor 594-conjugated secondary antibody (red) in PBS at room temperature in the dark.

Anti-STON1 Antibody - Background

KLH-conjugated synthetic peptide encompassing a sequence within the C-term region of human STON1. The exact sequence is proprietary.