

**Anti-Cadherin 9 Antibody**  
**Rabbit polyclonal antibody to Cadherin 9**  
**Catalog # AP61323****Specification**

---

**Anti-Cadherin 9 Antibody - Product Information**

Application	WB, IF/IC, IHC
Primary Accession	<a href="#">O9ULB4</a>
Other Accession	<a href="#">P70407</a>
Reactivity	Human, Mouse, Rat, Monkey
Host	Rabbit
Clonality	Polyclonal
Calculated MW	88689

**Anti-Cadherin 9 Antibody - Additional Information****Gene ID** 1007**Other Names**

Cadherin-9

**Target/Specificity**

KLH-conjugated synthetic peptide encompassing a sequence within the center region of human Cadherin 9. The exact sequence is proprietary.

**Dilution**

WB~~WB (1/500 - 1/1000), IH (1/50 - 1/200), IF/IC (1/100 - 1/500)

IF/IC~~N/A

IHC~~1:100~500

**Format**

Liquid in 0.42% Potassium phosphate, 0.87% Sodium chloride, pH 7.3, 30% glycerol, and 0.09% (W/V) sodium azide.

**Storage**

Store at -20 °C. Stable for 12 months from date of receipt

**Anti-Cadherin 9 Antibody - Protein Information****Name** CDH9**Function**

Cadherins are calcium-dependent cell adhesion proteins. They preferentially interact with themselves in a homophilic manner in connecting cells; cadherins may thus contribute to the sorting of heterogeneous cell types.

**Cellular Location**

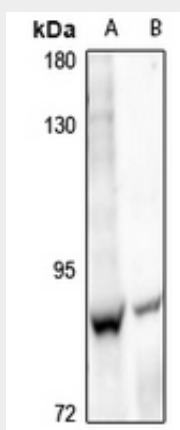
Cell membrane; Single-pass type I membrane protein

## Anti-Cadherin 9 Antibody - Protocols

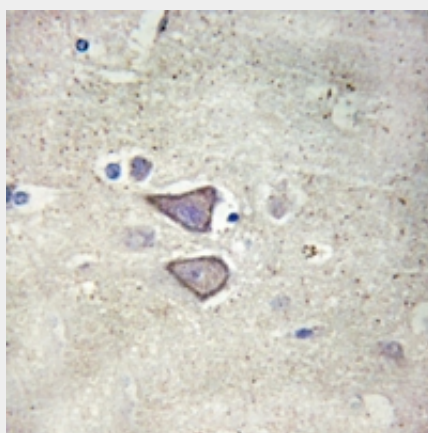
Provided below are standard protocols that you may find useful for product applications.

- [Western Blot](#)
- [Blocking Peptides](#)
- [Dot Blot](#)
- [Immunohistochemistry](#)
- [Immunofluorescence](#)
- [Immunoprecipitation](#)
- [Flow Cytometry](#)
- [Cell Culture](#)

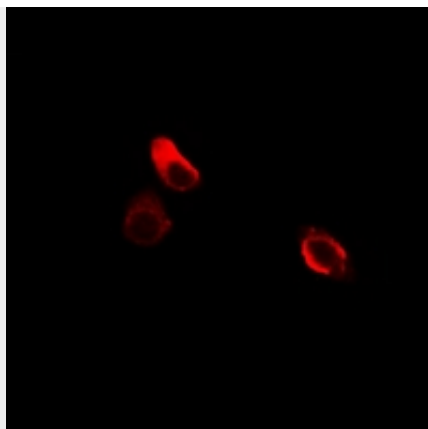
## Anti-Cadherin 9 Antibody - Images



Western blot analysis of Cadherin 9 expression in mouse embryo (A), rat lung (B) whole cell lysates.



Immunohistochemical analysis of Cadherin 9 staining in human brain formalin fixed paraffin embedded tissue section. The section was pre-treated using heat mediated antigen retrieval with sodium citrate buffer (pH 6.0). The section was then incubated with the antibody at room temperature and detected using an HRP conjugated compact polymer system. DAB was used as the chromogen. The section was then counterstained with haematoxylin and mounted with DPX.



Immunofluorescent analysis of Cadherin 9 staining in HeLa cells. Formalin-fixed cells were permeabilized with 0.1% Triton X-100 in TBS for 5-10 minutes and blocked with 3% BSA-PBS for 30 minutes at room temperature. Cells were probed with the primary antibody in 3% BSA-PBS and incubated overnight at 4 °C in a humidified chamber. Cells were washed with PBST and incubated with a Alexa Fluor 594-conjugated secondary antibody (red) in PBS at room temperature in the dark.

#### **Anti-Cadherin 9 Antibody - Background**

KLH-conjugated synthetic peptide encompassing a sequence within the center region of human Cadherin 9. The exact sequence is proprietary.