

Anti-MINT3 Antibody
Rabbit polyclonal antibody to MINT3
Catalog # AP61325**Specification**

Anti-MINT3 Antibody - Product Information

Application	WB, IHC
Primary Accession	O96018
Reactivity	Human
Host	Rabbit
Clonality	Polyclonal
Calculated MW	61454

Anti-MINT3 Antibody - Additional Information**Gene ID** 9546**Other Names**

MINT3; X11L2; Amyloid beta A4 precursor protein-binding family A member 3; Adapter protein X11gamma; Neuron-specific X11L2 protein; Neuronal Munc18-1-interacting protein 3; Mint-3

Target/Specificity

Recognizes endogenous levels of MINT3 protein.

Dilution

WB~~WB (1/500 - 1/1000), IH (1/50 - 1/200)

IHC~~1:100~500

Format

Liquid in 0.42% Potassium phosphate, 0.87% Sodium chloride, pH 7.3, 30% glycerol, and 0.09% (W/V) sodium azide.

Storage

Store at -20 °C. Stable for 12 months from date of receipt

Anti-MINT3 Antibody - Protein Information**Name** APBA3**Synonyms** MINT3, X11L2**Function**

May modulate processing of the amyloid-beta precursor protein (APP) and hence formation of APP-beta. May enhance the activity of HIF1A in macrophages by inhibiting the activity of HIF1AN.

Cellular Location

Cytoplasm, perinuclear region

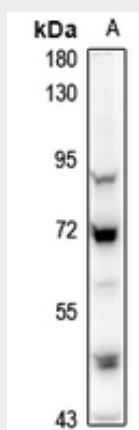
Tissue Location

Expressed in all tissues examined with lower levels in brain and testis

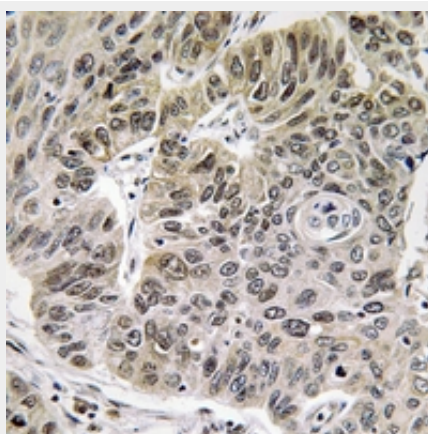
Anti-MINT3 Antibody - Protocols

Provided below are standard protocols that you may find useful for product applications.

- [Western Blot](#)
- [Blocking Peptides](#)
- [Dot Blot](#)
- [Immunohistochemistry](#)
- [Immunofluorescence](#)
- [Immunoprecipitation](#)
- [Flow Cytometry](#)
- [Cell Culture](#)

Anti-MINT3 Antibody - Images

Western blot analysis of MINT3 expression in MCF7 (A) whole cell lysates.



Immunohistochemical analysis of MINT3 staining in human lung cancer formalin fixed paraffin embedded tissue section. The section was pre-treated using heat mediated antigen retrieval with sodium citrate buffer (pH 6.0). The section was then incubated with the antibody at room temperature and detected using an HRP conjugated compact polymer system. DAB was used as the chromogen. The section was then counterstained with haematoxylin and mounted with DPX.

Anti-MINT3 Antibody - Background

KLH-conjugated synthetic peptide encompassing a sequence within the center region of human MINT3. The exact sequence is proprietary.