

Anti-Carboxypeptidase M Antibody
Rabbit polyclonal antibody to Carboxypeptidase M
Catalog # AP61327**Specification**

Anti-Carboxypeptidase M Antibody - Product Information

Application	WB
Primary Accession	P14384
Other Accession	Q80V42
Reactivity	Human, Mouse, Rat, Monkey
Host	Rabbit
Clonality	Polyclonal
Calculated MW	50514

Anti-Carboxypeptidase M Antibody - Additional Information**Gene ID** 1368**Other Names**

Carboxypeptidase M; CPM

Target/Specificity

KLH-conjugated synthetic peptide encompassing a sequence within the center region of human Carboxypeptidase M. The exact sequence is proprietary.

Dilution

WB~~WB (1/500 - 1/1000)

Format

Liquid in 0.42% Potassium phosphate, 0.87% Sodium chloride, pH 7.3, 30% glycerol, and 0.09% (W/V) sodium azide.

Storage

Store at -20 °C. Stable for 12 months from date of receipt

Anti-Carboxypeptidase M Antibody - Protein Information**Name** CPM**Function**

Specifically removes C-terminal basic residues (Arg or Lys) from peptides and proteins. It is believed to play important roles in the control of peptide hormone and growth factor activity at the cell surface, and in the membrane-localized degradation of extracellular proteins.

Cellular Location

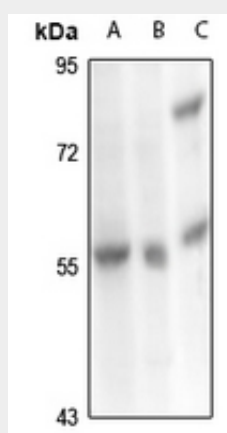
Cell membrane; Lipid-anchor, GPI-anchor

Anti-Carboxypeptidase M Antibody - Protocols

Provided below are standard protocols that you may find useful for product applications.

- [Western Blot](#)
- [Blocking Peptides](#)
- [Dot Blot](#)
- [Immunohistochemistry](#)
- [Immunofluorescence](#)
- [Immunoprecipitation](#)
- [Flow Cytometry](#)
- [Cell Culture](#)

Anti-Carboxypeptidase M Antibody - Images



Western blot analysis of Carboxypeptidase M expression in rat kidney (A), PC3 (B), mouse kidney (C) whole cell lysates.

Anti-Carboxypeptidase M Antibody - Background

KLH-conjugated synthetic peptide encompassing a sequence within the center region of human Carboxypeptidase M. The exact sequence is proprietary.