

Anti-CD55 Antibody
Rabbit polyclonal antibody to CD55
Catalog # AP61330**Specification**

Anti-CD55 Antibody - Product Information

Application	WB
Primary Accession	P08174
Reactivity	Human, Rat
Host	Rabbit
Clonality	Polyclonal
Calculated MW	41400

Anti-CD55 Antibody - Additional Information**Gene ID** 1604**Other Names**

CR; DAF; Complement decay-accelerating factor; CD55

Target/Specificity

Recognizes endogenous levels of CD55 protein.

Dilution

WB~~WB (1/500 - 1/1000)

Format

Liquid in 0.42% Potassium phosphate, 0.87% Sodium chloride, pH 7.3, 30% glycerol, and 0.09% (W/V) sodium azide.

Storage

Store at -20 °C. Stable for 12 months from date of receipt

Anti-CD55 Antibody - Protein Information**Name** CD55**Synonyms** CR, DAF**Function**

This protein recognizes C4b and C3b fragments that condense with cell-surface hydroxyl or amino groups when nascent C4b and C3b are locally generated during C4 and c3 activation. Interaction of daf with cell-associated C4b and C3b polypeptides interferes with their ability to catalyze the conversion of C2 and factor B to enzymatically active C2a and Bb and thereby prevents the formation of C4b2a and C3bBb, the amplification convertases of the complement cascade (PubMed:7525274). Inhibits complement activation by destabilizing and preventing the formation of C3 and C5 convertases, which prevents complement damage (PubMed:28657829).

Cellular Location

[Isoform 1]: Cell membrane; Single-pass type I membrane protein [Isoform 3]: Secreted [Isoform 5]: Secreted [Isoform 7]: Cell membrane; Lipid-anchor, GPI-anchor

Tissue Location

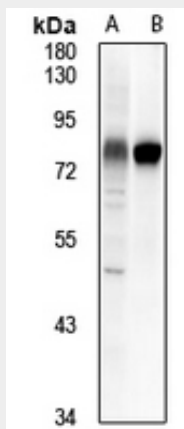
Expressed on the plasma membranes of all cell types that are in intimate contact with plasma complement proteins. It is also found on the surfaces of epithelial cells lining extracellular compartments, and variants of the molecule are present in body fluids and in extracellular matrix

Anti-CD55 Antibody - Protocols

Provided below are standard protocols that you may find useful for product applications.

- [Western Blot](#)
- [Blocking Peptides](#)
- [Dot Blot](#)
- [Immunohistochemistry](#)
- [Immunofluorescence](#)
- [Immunoprecipitation](#)
- [Flow Cytometry](#)
- [Cell Culture](#)

Anti-CD55 Antibody - Images



Western blot analysis of CD55 expression in A549 (A), rat lung (B) whole cell lysates.

Anti-CD55 Antibody - Background

KLH-conjugated synthetic peptide encompassing a sequence within the center region of human CD55. The exact sequence is proprietary.