

**Anti-RFX2 Antibody**  
**Rabbit polyclonal antibody to RFX2**  
**Catalog # AP61331****Specification**

---

**Anti-RFX2 Antibody - Product Information**

Application	WB, IHC
Primary Accession	<a href="#">P48378</a>
Reactivity	Human
Host	Rabbit
Clonality	Polyclonal
Calculated MW	79987

**Anti-RFX2 Antibody - Additional Information****Gene ID** 5990**Other Names**

DNA-binding protein RFX2; Regulatory factor X 2

**Target/Specificity**

KLH-conjugated synthetic peptide encompassing a sequence within the C-term region of human RFX2. The exact sequence is proprietary.

**Dilution**

WB~~WB (1/500 - 1/1000), IH (1/50 - 1/200)

IHC~~1:100~500

**Format**

Liquid in 0.42% Potassium phosphate, 0.87% Sodium chloride, pH 7.3, 30% glycerol, and 0.09% (W/V) sodium azide.

**Storage**

Store at -20 °C. Stable for 12 months from date of receipt

**Anti-RFX2 Antibody - Protein Information****Name** RFX2**Function**

Transcription factor that acts as a key regulator of spermatogenesis. Acts by regulating expression of genes required for the haploid phase during spermiogenesis, such as genes required for cilium assembly and function (By similarity). Recognizes and binds the X-box, a regulatory motif with DNA sequence 5'-GTNRCC(0-3N)RGYAAC-3' present on promoters (PubMed:<a href="http://www.uniprot.org/citations/10330134" target="\_blank">10330134</a>). Probably activates transcription of the testis-specific histone gene H1-6 (By similarity).

**Cellular Location**

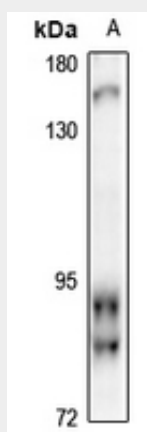
Nucleus {ECO:0000250|UniProtKB:B2GV50, ECO:0000255|PROSITE-ProRule:PRU00858}.  
Cytoplasm {ECO:0000250|UniProtKB:B2GV50}. Note=Mainly expressed in the nucleus and at lower level in cytoplasm. {ECO:0000250|UniProtKB:B2GV50}

### Anti-RFX2 Antibody - Protocols

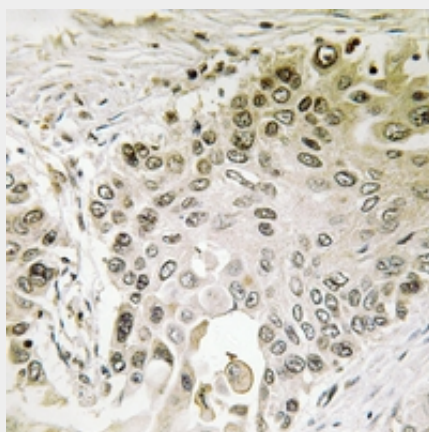
Provided below are standard protocols that you may find useful for product applications.

- [Western Blot](#)
- [Blocking Peptides](#)
- [Dot Blot](#)
- [Immunohistochemistry](#)
- [Immunofluorescence](#)
- [Immunoprecipitation](#)
- [Flow Cytometry](#)
- [Cell Culture](#)

### Anti-RFX2 Antibody - Images



Western blot analysis of RFX2 expression in A2780 (A) whole cell lysates.



Immunohistochemical analysis of RFX2 staining in human lung cancer formalin fixed paraffin embedded tissue section. The section was pre-treated using heat mediated antigen retrieval with sodium citrate buffer (pH 6.0). The section was then incubated with the antibody at room temperature and detected using an HRP conjugated compact polymer system. DAB was used as the chromogen. The section was then counterstained with haematoxylin and mounted with DPX.

**Anti-RFX2 Antibody - Background**

KLH-conjugated synthetic peptide encompassing a sequence within the C-term region of human RFX2. The exact sequence is proprietary.