

**Anti-GUF1 Antibody**  
**Rabbit polyclonal antibody to GUF1**  
**Catalog # AP61333****Specification**

---

**Anti-GUF1 Antibody - Product Information**

Application	WB, IHC
Primary Accession	<a href="#">Q8N442</a>
Reactivity	Human
Host	Rabbit
Clonality	Polyclonal
Calculated MW	74328

**Anti-GUF1 Antibody - Additional Information****Gene ID** 60558**Other Names**

Translation factor GUF1 mitochondrial; Elongation factor 4 homolog; EF-4; GTPase GUF1;  
Ribosomal back-translocase

**Target/Specificity**

KLH-conjugated synthetic peptide encompassing a sequence within the center region of human GUF1. The exact sequence is proprietary.

**Dilution**

WB~~WB (1/500 - 1/1000), IH (1/50 - 1/200)  
IHC~~1:100~500

**Format**

Liquid in 0.42% Potassium phosphate, 0.87% Sodium chloride, pH 7.3, 30% glycerol, and 0.09% (W/V) sodium azide.

**Storage**

Store at -20 °C. Stable for 12 months from date of receipt

**Anti-GUF1 Antibody - Protein Information****Name** GUF1 {ECO:0000255|HAMAP-Rule:MF\_03137}**Function**

Promotes mitochondrial protein synthesis. May act as a fidelity factor of the translation reaction, by catalyzing a one-codon backward translocation of tRNAs on improperly translocated ribosomes. Binds to mitochondrial ribosomes in a GTP-dependent manner.

**Cellular Location**

Mitochondrion inner membrane {ECO:0000255|HAMAP- Rule:MF\_03137}; Peripheral membrane protein {ECO:0000255|HAMAP- Rule:MF\_03137}; Matrix side

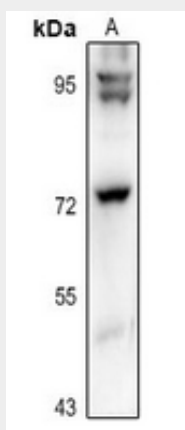
{ECO:0000255|HAMAP-Rule:MF\_03137}

### Anti-GUF1 Antibody - Protocols

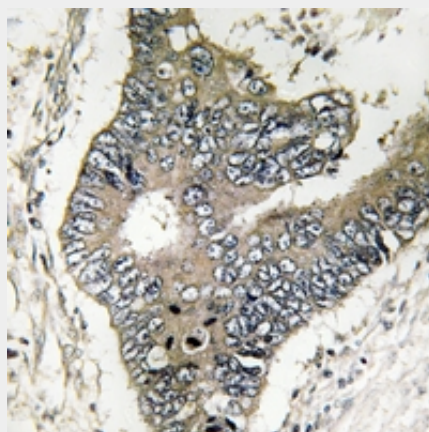
Provided below are standard protocols that you may find useful for product applications.

- [Western Blot](#)
- [Blocking Peptides](#)
- [Dot Blot](#)
- [Immunohistochemistry](#)
- [Immunofluorescence](#)
- [Immunoprecipitation](#)
- [Flow Cytometry](#)
- [Cell Culture](#)

### Anti-GUF1 Antibody - Images



Western blot analysis of GUF1 expression in SHSY5Y (A) whole cell lysates.



Immunohistochemical analysis of GUF1 staining in human colon cancer formalin fixed paraffin embedded tissue section. The section was pre-treated using heat mediated antigen retrieval with sodium citrate buffer (pH 6.0). The section was then incubated with the antibody at room temperature and detected using an HRP conjugated compact polymer system. DAB was used as the chromogen. The section was then counterstained with haematoxylin and mounted with DPX.

### Anti-GUF1 Antibody - Background

KLH-conjugated synthetic peptide encompassing a sequence within the center region of human GUF1. The exact sequence is proprietary.