

Anti-SIX5 Antibody
Rabbit polyclonal antibody to SIX5
Catalog # AP61335**Specification**

Anti-SIX5 Antibody - Product Information

Application	WB
Primary Accession	Q8N196
Other Accession	P70178
Reactivity	Human, Mouse
Host	Rabbit
Clonality	Polyclonal
Calculated MW	74562

Anti-SIX5 Antibody - Additional Information**Gene ID** 147912**Other Names**

DMAHP; Homeobox protein SIX5; DM locus-associated homeodomain protein; Sine oculis homeobox homolog 5

Target/Specificity

Recognizes endogenous levels of SIX5 protein.

Dilution

WB~~WB (1/500 - 1/1000)

Format

Liquid in 0.42% Potassium phosphate, 0.87% Sodium chloride, pH 7.3, 30% glycerol, and 0.09% (W/V) sodium azide.

Storage

Store at -20 °C. Stable for 12 months from date of receipt

Anti-SIX5 Antibody - Protein Information**Name** SIX5**Synonyms** DMAHP**Function**

Transcription factor that is thought to be involved in regulation of organogenesis. May be involved in determination and maintenance of retina formation. Binds a 5'-GGTGTCAG-3' motif present in the ARE regulatory element of ATP1A1. Binds a 5'-TCA[AG][AG]TTNC-3' motif present in the MEF3 element in the myogenin promoter, and in the IGFBP5 promoter (By similarity). Thought to be regulated by association with Dach and Eya proteins, and seems to be coactivated by EYA1, EYA2 and EYA3 (By similarity).

Cellular Location

Cytoplasm. Nucleus {ECO:0000255|PROSITE-ProRule:PRU00108,
ECO:0000269|PubMed:12500905}

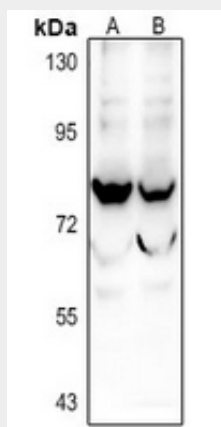
Tissue Location

Expressed in adult but not in fetal eyes. Found in corneal epithelium and endothelium, lens epithelium, ciliary body epithelia, cellular layers of the retina and the sclera

Anti-SIX5 Antibody - Protocols

Provided below are standard protocols that you may find useful for product applications.

- [Western Blot](#)
- [Blocking Peptides](#)
- [Dot Blot](#)
- [Immunohistochemistry](#)
- [Immunofluorescence](#)
- [Immunoprecipitation](#)
- [Flow Cytometry](#)
- [Cell Culture](#)

Anti-SIX5 Antibody - Images

Western blot analysis of SIX5 expression in SGC7901 (A), LO2 (B) whole cell lysates.

Anti-SIX5 Antibody - Background

KLH-conjugated synthetic peptide encompassing a sequence within the center region of human SIX5. The exact sequence is proprietary.