

Anti-ME1 Antibody
Rabbit polyclonal antibody to ME1
Catalog # AP61339**Specification**

Anti-ME1 Antibody - Product Information

Application	WB
Primary Accession	P48163
Reactivity	Human, Rat, Pig
Host	Rabbit
Clonality	Polyclonal
Calculated MW	64150

Anti-ME1 Antibody - Additional Information**Gene ID** 4199**Other Names**

NADP-dependent malic enzyme; NADP-ME; Malic enzyme 1

Target/Specificity

Recognizes endogenous levels of ME1 protein.

Dilution

WB~~WB (1/500 - 1/1000)

Format

Liquid in 0.42% Potassium phosphate, 0.87% Sodium chloride, pH 7.3, 30% glycerol, and 0.09% (W/V) sodium azide.

Storage

Store at -20 °C.Stable for 12 months from date of receipt

Anti-ME1 Antibody - Protein Information**Name** ME1 ([HGNC:6983](#))**Function**

Catalyzes the oxidative decarboxylation of (S)-malate in the presence of NADP(+) and divalent metal ions, and decarboxylation of oxaloacetate.

Cellular Location

Cytoplasm.

Tissue Location

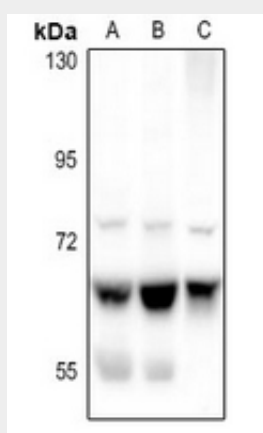
Expressed in all tissues tested including liver, placenta and white adipose tissue.

Anti-ME1 Antibody - Protocols

Provided below are standard protocols that you may find useful for product applications.

- [Western Blot](#)
- [Blocking Peptides](#)
- [Dot Blot](#)
- [Immunohistochemistry](#)
- [Immunofluorescence](#)
- [Immunoprecipitation](#)
- [Flow Cytometry](#)
- [Cell Culture](#)

Anti-ME1 Antibody - Images



Western blot analysis of ME1 expression in Panc1 (A), SGC7901 (B), rat skin (C) whole cell lysates.

Anti-ME1 Antibody - Background

KLH-conjugated synthetic peptide encompassing a sequence within the C-term region of human ME1. The exact sequence is proprietary.