

Anti-ARHGEF11 Antibody
Rabbit polyclonal antibody to ARHGEF11
Catalog # AP61342**Specification**

Anti-ARHGEF11 Antibody - Product Information

Application	WB
Primary Accession	O15085
Reactivity	Human, Mouse
Host	Rabbit
Clonality	Polyclonal
Calculated MW	167704

Anti-ARHGEF11 Antibody - Additional Information**Gene ID** 9826**Other Names**

KIAA0380; Rho guanine nucleotide exchange factor 11; PDZ-RhoGEF

Target/Specificity

Recognizes endogenous levels of ARHGEF11 protein.

Dilution

WB~~WB (1/500 - 1/1000)

Format

Liquid in 0.42% Potassium phosphate, 0.87% Sodium chloride, pH 7.3, 30% glycerol, and 0.09% (W/V) sodium azide.

Storage

Store at -20 °C. Stable for 12 months from date of receipt

Anti-ARHGEF11 Antibody - Protein Information**Name** ARHGEF11**Synonyms** KIAA0380**Function**

May play a role in the regulation of RhoA GTPase by guanine nucleotide-binding alpha-12 (GNA12) and alpha-13 (GNA13). Acts as guanine nucleotide exchange factor (GEF) for RhoA GTPase and may act as GTPase-activating protein (GAP) for GNA12 and GNA13. Involved in neurotrophin-induced neurite outgrowth.

Cellular Location

Cytoplasm. Membrane. Note=Translocated to the membrane upon stimulation

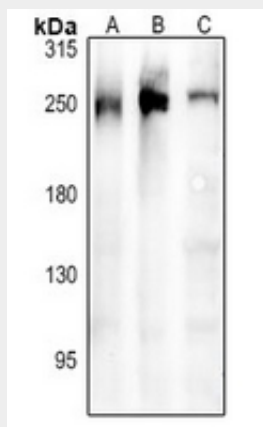
Tissue Location

Ubiquitously expressed.

Anti-ARHGEF11 Antibody - Protocols

Provided below are standard protocols that you may find useful for product applications.

- [Western Blot](#)
- [Blocking Peptides](#)
- [Dot Blot](#)
- [Immunohistochemistry](#)
- [Immunofluorescence](#)
- [Immunoprecipitation](#)
- [Flow Cytometry](#)
- [Cell Culture](#)

Anti-ARHGEF11 Antibody - Images

Western blot analysis of ARHGEF11 expression in Raw264.7 (A), HepG2 (B), MCF7 (C) whole cell lysates.

Anti-ARHGEF11 Antibody - Background

KLH-conjugated synthetic peptide encompassing a sequence within the N-term region of human ARHGEF11. The exact sequence is proprietary.