

Anti-NPT3 Antibody
Rabbit polyclonal antibody to NPT3
Catalog # AP61344**Specification**

Anti-NPT3 Antibody - Product Information

Application	WB
Primary Accession	O00624
Reactivity	Human
Host	Rabbit
Clonality	Polyclonal
Calculated MW	47277

Anti-NPT3 Antibody - Additional Information**Gene ID** 10246**Other Names**NPT3; Sodium-dependent phosphate transport protein 3; Na(+)/PI cotransporter 3;
Sodium/phosphate cotransporter 3; Solute carrier family 17 member 2**Target/Specificity**

Recognizes endogenous levels of NPT3 protein.

Dilution

WB~~WB (1/500 - 1/1000)

Format

Liquid in 0.42% Potassium phosphate, 0.87% Sodium chloride, pH 7.3, 30% glycerol, and 0.09% (W/V) sodium azide.

Storage

Store at -20 °C.Stable for 12 months from date of receipt

Anti-NPT3 Antibody - Protein Information**Name** SLC17A2**Synonyms** NPT3**Function**

Acts as a membrane potential-dependent organic anion transporter, the transport requires a low concentration of chloride ions (By similarity). Mediates chloride-dependent transport of urate (By similarity). Can actively transport inorganic phosphate into cells via Na(+) cotransport (By similarity).

Cellular Location

Apical cell membrane {ECO:0000250|UniProtKB:Q5SZA1}; Multi-pass membrane protein

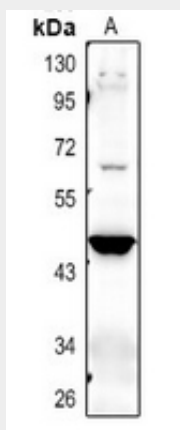
Tissue Location

Expressed in the small intestine, kidney, spleen and testis. Not detected in fetal brain, bone marrow, and mammary gland.

Anti-NPT3 Antibody - Protocols

Provided below are standard protocols that you may find useful for product applications.

- [Western Blot](#)
- [Blocking Peptides](#)
- [Dot Blot](#)
- [Immunohistochemistry](#)
- [Immunofluorescence](#)
- [Immunoprecipitation](#)
- [Flow Cytometry](#)
- [Cell Culture](#)

Anti-NPT3 Antibody - Images

Western blot analysis of NPT3 expression in HCT116 (A) whole cell lysates.

Anti-NPT3 Antibody - Background

KLH-conjugated synthetic peptide encompassing a sequence within the center region of human NPT3. The exact sequence is proprietary.