

Anti-Alpha-internexin Antibody
Rabbit polyclonal antibody to Alpha-internexin
Catalog # AP61348

Specification

Anti-Alpha-internexin Antibody - Product Information

Application	WB
Primary Accession	Q16352
Other Accession	P46660
Reactivity	Human, Mouse, Rat, Bovine
Host	Rabbit
Clonality	Polyclonal
Calculated MW	55391

Anti-Alpha-internexin Antibody - Additional Information

Gene ID 9118

Other Names

NEF5; Alpha-internexin; Alpha-Inx; 66 kDa neurofilament protein; NF-66; Neurofilament-66; Neurofilament 5

Target/Specificity

KLH-conjugated synthetic peptide encompassing a sequence within the center region of human Alpha-internexin. The exact sequence is proprietary.

Dilution

WB~~WB (1/500 - 1/1000)

Format

Liquid in 0.42% Potassium phosphate, 0.87% Sodium chloride, pH 7.3, 30% glycerol, and 0.09% (W/V) sodium azide.

Storage

Store at -20 °C.Stable for 12 months from date of receipt

Anti-Alpha-internexin Antibody - Protein Information

Name INA

Synonyms NEF5

Function

Class-IV neuronal intermediate filament that is able to self- assemble. It is involved in the morphogenesis of neurons. It may form an independent structural network without the involvement of other neurofilaments or it may cooperate with NEFL to form the filamentous backbone to which NEFM and NEFH attach to form the cross-bridges. May also cooperate with the neuronal intermediate filament protein PRPH to form filamentous networks (By similarity).

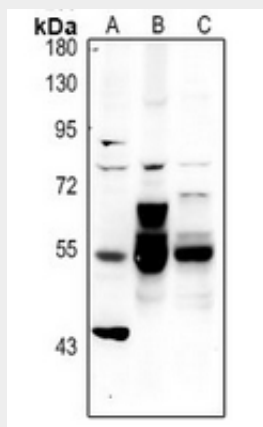
Tissue Location

Found predominantly in adult CNS.

Anti-Alpha-internexin Antibody - Protocols

Provided below are standard protocols that you may find useful for product applications.

- [Western Blot](#)
- [Blocking Peptides](#)
- [Dot Blot](#)
- [Immunohistochemistry](#)
- [Immunofluorescence](#)
- [Immunoprecipitation](#)
- [Flow Cytometry](#)
- [Cell Culture](#)

Anti-Alpha-internexin Antibody - Images

Western blot analysis of Alpha-internexin expression in U87MG (A), mouse brain (B), rat brain (C) whole cell lysates.

Anti-Alpha-internexin Antibody - Background

KLH-conjugated synthetic peptide encompassing a sequence within the center region of human Alpha-internexin. The exact sequence is proprietary.