

Anti-EMR1 Antibody
Rabbit polyclonal antibody to EMR1
Catalog # AP61352**Specification**

Anti-EMR1 Antibody - Product Information

| | |
|-------------------|------------------------|
| Application | WB |
| Primary Accession | Q14246 |
| Reactivity | Human, Rat |
| Host | Rabbit |
| Clonality | Polyclonal |
| Calculated MW | 97683 |

Anti-EMR1 Antibody - Additional Information**Gene ID** 2015**Other Names**

EMR1; TM7LN3; EGF-like module-containing mucin-like hormone receptor-like 1; EGF-like module receptor 1; EMR1 hormone receptor; Adhesion G protein-coupled receptor E1

Target/Specificity

Recognizes endogenous levels of EMR1 protein.

Dilution

WB~~WB (1/500 - 1/1000)

Format

Liquid in 0.42% Potassium phosphate, 0.87% Sodium chloride, pH 7.3, 30% glycerol, and 0.09% (W/V) sodium azide.

Storage

Store at -20 °C. Stable for 12 months from date of receipt

Anti-EMR1 Antibody - Protein Information**Name** ADGRE1 ([HGNC:3336](#))**Synonyms** EMR1, TM7LN3**Function**

Orphan receptor involved in cell adhesion and probably in cell-cell interactions specifically involving cells of the immune system. May play a role in regulatory T-cells (Treg) development.

Cellular Location

Cell membrane; Multi-pass membrane protein

Tissue Location

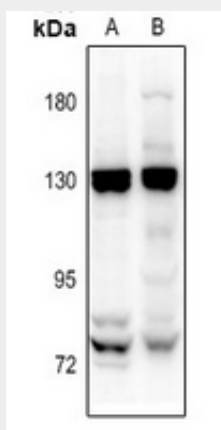
Expression is restricted to eosinophils.

Anti-EMR1 Antibody - Protocols

Provided below are standard protocols that you may find useful for product applications.

- [Western Blot](#)
- [Blocking Peptides](#)
- [Dot Blot](#)
- [Immunohistochemistry](#)
- [Immunofluorescence](#)
- [Immunoprecipitation](#)
- [Flow Cytometry](#)
- [Cell Culture](#)

Anti-EMR1 Antibody - Images



Western blot analysis of EMR1 expression in SHSY5Y (A), HCT116 (B) whole cell lysates.

Anti-EMR1 Antibody - Background

KLH-conjugated synthetic peptide encompassing a sequence within the C-term region of human EMR1. The exact sequence is proprietary.