

Anti-CHRM4 Antibody
Rabbit polyclonal antibody to CHRM4
Catalog # AP61353**Specification**

Anti-CHRM4 Antibody - Product Information

| | |
|-------------------|------------------------|
| Application | WB, IF |
| Primary Accession | P08173 |
| Other Accession | P32211 |
| Reactivity | Human, Mouse, Rat |
| Host | Rabbit |
| Clonality | Polyclonal |
| Calculated MW | 53049 |

Anti-CHRM4 Antibody - Additional Information**Gene ID** 1132**Other Names**

Muscarinic acetylcholine receptor M4

Target/Specificity

Recognizes endogenous levels of CHRM4 protein.

Dilution

WB~~WB (1/500 - 1/1000), IF/IC (1/100 - 1/500)

IF~~WB (1/500 - 1/1000), IF/IC (1/100 - 1/500)

Format

Liquid in 0.42% Potassium phosphate, 0.87% Sodium chloride, pH 7.3, 30% glycerol, and 0.09% (W/V) sodium azide.

Storage

Store at -20 °C.Stable for 12 months from date of receipt

Anti-CHRM4 Antibody - Protein Information**Name** CHRM4**Function**

The muscarinic acetylcholine receptor mediates various cellular responses, including inhibition of adenylate cyclase, breakdown of phosphoinositides and modulation of potassium channels through the action of G proteins. Primary transducing effect is inhibition of adenylate cyclase.

Cellular Location

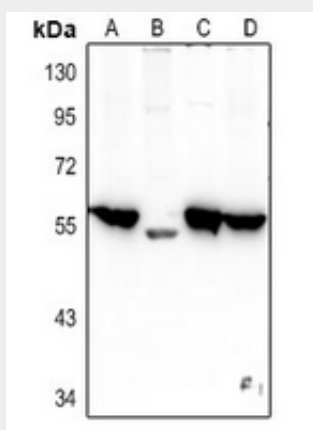
Cell membrane; Multi-pass membrane protein. Postsynaptic cell membrane; Multi-pass membrane protein

Anti-CHRM4 Antibody - Protocols

Provided below are standard protocols that you may find useful for product applications.

- [Western Blot](#)
- [Blocking Peptides](#)
- [Dot Blot](#)
- [Immunohistochemistry](#)
- [Immunofluorescence](#)
- [Immunoprecipitation](#)
- [Flow Cytometry](#)
- [Cell Culture](#)

Anti-CHRM4 Antibody - Images



Western blot analysis of CHRM4 expression in C6 (A), SGC7901 (B), U87MG (C), A375 (D) whole cell lysates.



Immunofluorescent analysis of CHRM4 staining in LOVO cells. Formalin-fixed cells were permeabilized with 0.1% Triton X-100 in TBS for 5-10 minutes and blocked with 3% BSA-PBS for 30 minutes at room temperature. Cells were probed with the primary antibody in 3% BSA-PBS and incubated overnight at 4 °C in a humidified chamber. Cells were washed with PBST and incubated with a Alexa Fluor 594-conjugated secondary antibody (red) in PBS at room temperature in the dark.

Anti-CHRM4 Antibody - Background

KLH-conjugated synthetic peptide encompassing a sequence within the center region of human CHRM4. The exact sequence is proprietary.