

Anti-NMBR Antibody
Rabbit polyclonal antibody to NMBR
Catalog # AP61356**Specification**

Anti-NMBR Antibody - Product Information

Application	WB, IF/IC
Primary Accession	P28336
Other Accession	O54799
Reactivity	Human, Mouse, Rat
Host	Rabbit
Clonality	Polyclonal
Calculated MW	43435

Anti-NMBR Antibody - Additional Information**Gene ID** 4829**Other Names**

Neuromedin-B receptor; NMB-R; Epididymis tissue protein Li 185a; Neuromedin-B-preferring bombesin receptor

Target/Specificity

KLH-conjugated synthetic peptide encompassing a sequence within the center region of human NMBR. The exact sequence is proprietary.

Dilution

WB~~WB (1/500 - 1/1000), IF/IC (1/100 - 1/500)
IF/IC~~N/A

Format

Liquid in 0.42% Potassium phosphate, 0.87% Sodium chloride, pH 7.3, 30% glycerol, and 0.09% (W/V) sodium azide.

Storage

Store at -20 °C. Stable for 12 months from date of receipt

Anti-NMBR Antibody - Protein Information**Name** NMBR**Function**

Receptor for neuromedin-B (PubMed:1655761). Contributes to the maintenance of basal sigh rate through signaling in the pre- Botzinger complex, a cluster of several thousand neurons in the ventrolateral medulla responsible for inspiration during respiratory activity (By similarity). Contributes to the induction of sneezing following exposure to chemical irritants or allergens which causes release of NMB by nasal sensory neurons and activation of NMBR- expressing neurons in the sneeze-evoking

region of the brainstem (By similarity). These in turn activate neurons of the caudal ventral respiratory group, giving rise to the sneezing response (By similarity). Contributes to induction of acute itch, possibly through its activation on dorsal root ganglion neurons by the NMB peptide (By similarity). Plays a role in the innate immune response to influenza A virus infection by enhancing interferon alpha expression and reducing expression of IL6 (PubMed:31601264). Plays a role in CSF1-induced proliferation of osteoclast precursors by contributing to the positive regulation of the expression of the CSF1 receptor CSF1R (By similarity).

Cellular Location

Cell membrane; Multi-pass membrane protein

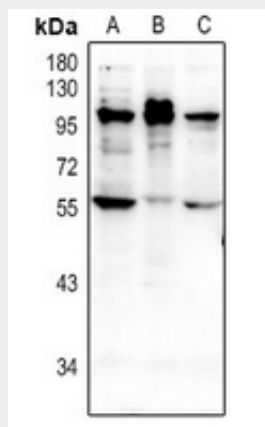
Tissue Location

Expressed in epididymis (at protein level).

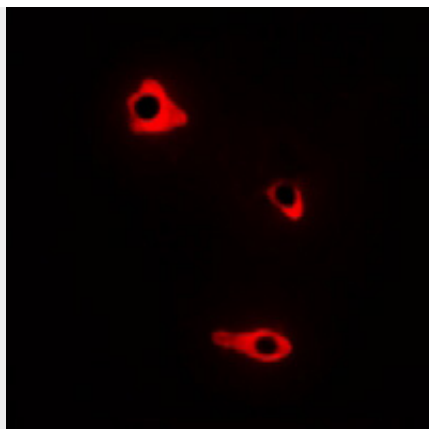
Anti-NMBR Antibody - Protocols

Provided below are standard protocols that you may find useful for product applications.

- [Western Blot](#)
- [Blocking Peptides](#)
- [Dot Blot](#)
- [Immunohistochemistry](#)
- [Immunofluorescence](#)
- [Immunoprecipitation](#)
- [Flow Cytometry](#)
- [Cell Culture](#)

Anti-NMBR Antibody - Images

Western blot analysis of NMBR expression in EC9706 (A), Hela (B), PC3 (C) whole cell lysates.



Immunofluorescent analysis of NMBR staining in A549 cells. Formalin-fixed cells were permeabilized with 0.1% Triton X-100 in TBS for 5-10 minutes and blocked with 3% BSA-PBS for 30 minutes at room temperature. Cells were probed with the primary antibody in 3% BSA-PBS and incubated overnight at 4 °C in a humidified chamber. Cells were washed with PBST and incubated with a Alexa Fluor 594-conjugated secondary antibody (red) in PBS at room temperature in the dark.

Anti-NMBR Antibody - Background

KLH-conjugated synthetic peptide encompassing a sequence within the center region of human NMBR. The exact sequence is proprietary.