

Anti-RRH Antibody
Rabbit polyclonal antibody to RRH
Catalog # AP61357**Specification**

Anti-RRH Antibody - Product Information

Application	WB
Primary Accession	O14718
Reactivity	Human
Host	Rabbit
Clonality	Polyclonal
Calculated MW	37423

Anti-RRH Antibody - Additional Information**Gene ID** 10692**Other Names**

Visual pigment-like receptor peropsin

Target/Specificity

Recognizes endogenous levels of RRH protein.

Dilution

WB~~WB (1/500 - 1/1000)

Format

Liquid in 0.42% Potassium phosphate, 0.87% Sodium chloride, pH 7.3, 30% glycerol, and 0.09% (W/V) sodium azide.

Storage

Store at -20 °C.Stable for 12 months from date of receipt

Anti-RRH Antibody - Protein Information**Name** RRH**Function**

May play a role in rpe physiology either by detecting light directly or by monitoring the concentration of retinoids or other photoreceptor-derived compounds.

Cellular Location

Membrane; Multi-pass membrane protein

Tissue Location

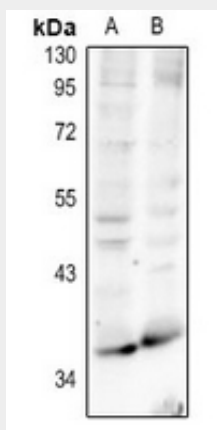
Found only in the eye, where it is localized to the retinal pigment epithelium (RPE). In the RPE, it is localized to the microvilli that surround the photoreceptor outer segments

Anti-RRH Antibody - Protocols

Provided below are standard protocols that you may find useful for product applications.

- [Western Blot](#)
- [Blocking Peptides](#)
- [Dot Blot](#)
- [Immunohistochemistry](#)
- [Immunofluorescence](#)
- [Immunoprecipitation](#)
- [Flow Cytometry](#)
- [Cell Culture](#)

Anti-RRH Antibody - Images



Western blot analysis of RRH expression in MCF7 (A), PC3 (B) whole cell lysates.

Anti-RRH Antibody - Background

KLH-conjugated synthetic peptide encompassing a sequence within the center region of human RRH. The exact sequence is proprietary.