

**Anti-E2F5 Antibody**  
**Rabbit polyclonal antibody to E2F5**  
**Catalog # AP61360****Specification**

---

**Anti-E2F5 Antibody - Product Information**

Application	<b>WB</b>
Primary Accession	<a href="#">Q15329</a>
Other Accession	<a href="#">Q61502</a>
Reactivity	<b>Human, Mouse, Rat</b>
Host	<b>Rabbit</b>
Clonality	<b>Polyclonal</b>
Calculated MW	<b>37610</b>

**Anti-E2F5 Antibody - Additional Information****Gene ID** 1875**Other Names**

Transcription factor E2F5; E2F-5

**Target/Specificity**

KLH-conjugated synthetic peptide encompassing a sequence within the center region of human E2F5. The exact sequence is proprietary.

**Dilution**

WB~~WB (1/500 - 1/1000)

**Format**

Liquid in 0.42% Potassium phosphate, 0.87% Sodium chloride, pH 7.3, 30% glycerol, and 0.09% (W/V) sodium azide.

**Storage**

Store at -20 °C. Stable for 12 months from date of receipt

**Anti-E2F5 Antibody - Protein Information****Name** E2F5**Function**

Transcriptional activator that binds to E2F sites, these sites are present in the promoter of many genes whose products are involved in cell proliferation. May mediate growth factor-initiated signal transduction. It is likely involved in the early responses of resting cells to growth factor stimulation. Specifically required for multiciliate cell differentiation: together with MCIDAS and E2F5, binds and activate genes required for centriole biogenesis.

**Cellular Location**

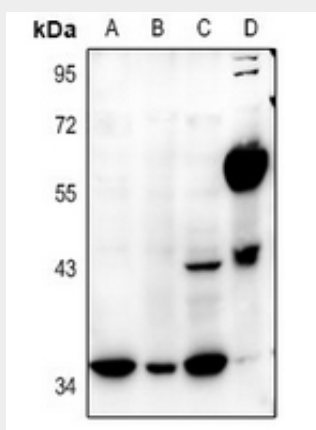
Nucleus.

## Anti-E2F5 Antibody - Protocols

Provided below are standard protocols that you may find useful for product applications.

- [Western Blot](#)
- [Blocking Peptides](#)
- [Dot Blot](#)
- [Immunohistochemistry](#)
- [Immunofluorescence](#)
- [Immunoprecipitation](#)
- [Flow Cytometry](#)
- [Cell Culture](#)

## Anti-E2F5 Antibody - Images



Western blot analysis of E2F5 expression in Myla2059 (A), HEK293T (B), MCF7 (C), mouse testis (D) whole cell lysates.

## Anti-E2F5 Antibody - Background

KLH-conjugated synthetic peptide encompassing a sequence within the center region of human E2F5. The exact sequence is proprietary.