

Anti-CD103 Antibody
Rabbit polyclonal antibody to CD103
Catalog # AP61364**Specification**

Anti-CD103 Antibody - Product Information

Application	WB
Primary Accession	P38570
Reactivity	Human
Host	Rabbit
Clonality	Polyclonal
Calculated MW	130159

Anti-CD103 Antibody - Additional Information**Gene ID** 3682**Other Names**

Integrin alpha-E; HML-1 antigen; Integrin alpha-IEL; Mucosal lymphocyte 1 antigen; CD103

Target/Specificity

Recognizes endogenous levels of CD103 protein.

Dilution

WB~~WB (1/500 - 1/1000)

Format

Liquid in 0.42% Potassium phosphate, 0.87% Sodium chloride, pH 7.3, 30% glycerol, and 0.09% (W/V) sodium azide.

Storage

Store at -20 °C. Stable for 12 months from date of receipt

Anti-CD103 Antibody - Protein Information**Name** ITGAE**Function**

Integrin alpha-E/beta-7 is a receptor for E-cadherin. It mediates adhesion of intra-epithelial T-lymphocytes to epithelial cell monolayers.

Cellular Location

Membrane; Single-pass type I membrane protein.

Tissue Location

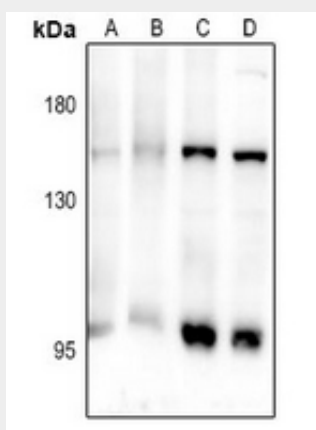
Expressed on a subclass of T-lymphocytes known as intra-epithelial lymphocytes which are located between mucosal epithelial cells

Anti-CD103 Antibody - Protocols

Provided below are standard protocols that you may find useful for product applications.

- [Western Blot](#)
- [Blocking Peptides](#)
- [Dot Blot](#)
- [Immunohistochemistry](#)
- [Immunofluorescence](#)
- [Immunoprecipitation](#)
- [Flow Cytometry](#)
- [Cell Culture](#)

Anti-CD103 Antibody - Images



Western blot analysis of CD103 expression in PMVEC (A), SP20 (B), SGC7901 (C), A549 (D) whole cell lysates.

Anti-CD103 Antibody - Background

KLH-conjugated synthetic peptide encompassing a sequence within the N-term region of human CD103. The exact sequence is proprietary.