

**Anti-CD11c Antibody**  
**Rabbit polyclonal antibody to CD11c**  
**Catalog # AP61371****Specification**

---

**Anti-CD11c Antibody - Product Information**

Application	WB, IHC
Primary Accession	<a href="#">P20702</a>
Reactivity	Human
Host	Rabbit
Clonality	Polyclonal
Calculated MW	127829

**Anti-CD11c Antibody - Additional Information****Gene ID** 3687**Other Names**

CD11C; Integrin alpha-X; CD11 antigen-like family member C; Leu M5; Leukocyte adhesion glycoprotein p15095 alpha chain; Leukocyte adhesion receptor p15095; CD11c

**Target/Specificity**

KLH-conjugated synthetic peptide encompassing a sequence within the center region of human CD11c. The exact sequence is proprietary.

**Dilution**

WB~~WB (1/500 - 1/1000), IH (1/50 - 1/200)

IHC~~1:100~500

**Format**

Liquid in 0.42% Potassium phosphate, 0.87% Sodium chloride, pH 7.3, 30% glycerol, and 0.09% (W/V) sodium azide.

**Storage**

Store at -20 °C. Stable for 12 months from date of receipt

**Anti-CD11c Antibody - Protein Information****Name** ITGAX**Synonyms** CD11C**Function**

Integrin alpha-X/beta-2 is a receptor for fibrinogen. It recognizes the sequence G-P-R in fibrinogen. It mediates cell-cell interaction during inflammatory responses. It is especially important in monocyte adhesion and chemotaxis.

**Cellular Location**

Membrane; Single-pass type I membrane protein.

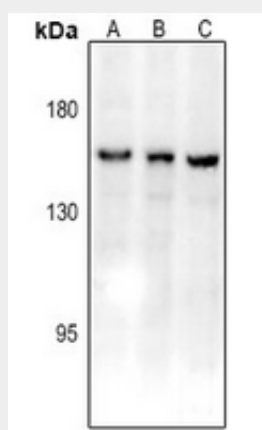
**Tissue Location**

Predominantly expressed in monocytes and granulocytes

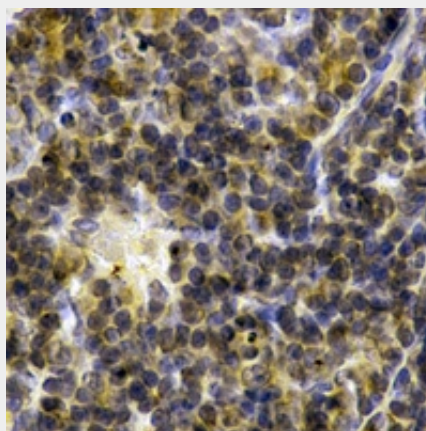
**Anti-CD11c Antibody - Protocols**

Provided below are standard protocols that you may find useful for product applications.

- [Western Blot](#)
- [Blocking Peptides](#)
- [Dot Blot](#)
- [Immunohistochemistry](#)
- [Immunofluorescence](#)
- [Immunoprecipitation](#)
- [Flow Cytometry](#)
- [Cell Culture](#)

**Anti-CD11c Antibody - Images**

Western blot analysis of CD11c expression in U87MG (A), A549 (B), Myla2059 (C) whole cell lysates.



Immunohistochemical analysis of CD11c staining in human spleen formalin fixed paraffin embedded tissue section. The section was pre-treated using heat mediated antigen retrieval with sodium citrate buffer (pH 6.0). The section was then incubated with the antibody at room

temperature and detected using an HRP conjugated compact polymer system. DAB was used as the chromogen. The section was then counterstained with haematoxylin and mounted with DPX.

**Anti-CD11c Antibody - Background**

KLH-conjugated synthetic peptide encompassing a sequence within the center region of human CD11c. The exact sequence is proprietary.