

**Anti-CDC25 (pS916) Antibody**  
**Rabbit polyclonal antibody to CDC25 (pS916)**  
**Catalog # AP61378****Specification**

---

**Anti-CDC25 (pS916) Antibody - Product Information**

|                   |                        |
|-------------------|------------------------|
| Application       | WB, IF/IC, IHC         |
| Primary Accession | <a href="#">Q13972</a> |
| Other Accession   | <a href="#">P27671</a> |
| Reactivity        | Human, Mouse           |
| Host              | Rabbit                 |
| Clonality         | Polyclonal             |
| Calculated MW     | 145234                 |

**Anti-CDC25 (pS916) Antibody - Additional Information****Gene ID** 5923**Other Names**RASGRF1; CDC25; GNRP; GRF1; Ras-specific guanine nucleotide-releasing factor 1; Ras-GRF1;  
Guanine nucleotide-releasing protein; GNRP; Ras-specific nucleotide exchange factor CDC25**Target/Specificity**

KLH-conjugated synthetic peptide encompassing a sequence within the center region of human CDC25 (pS916). The exact sequence is proprietary.

**Dilution**WB~~WB (1/500 - 1/1000), IH (1/50 - 1/200), IF/IC (1/100 - 1/500)  
IF/IC~~N/A  
IHC~~1:100~500**Format**

Liquid in 0.42% Potassium phosphate, 0.87% Sodium chloride, pH 7.3, 30% glycerol, and 0.09% (W/V) sodium azide.

**Storage**

Store at -20 °C. Stable for 12 months from date of receipt

**Anti-CDC25 (pS916) Antibody - Protein Information****Name** RASGRF1**Synonyms** CDC25, GNRP, GRF1**Function**

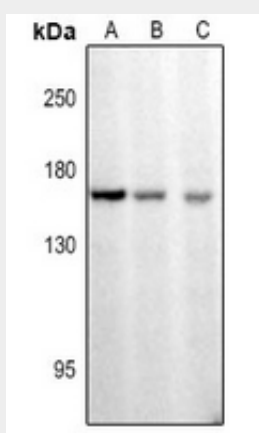
Promotes the exchange of Ras-bound GDP by GTP.

## Anti-CDC25 (pS916) Antibody - Protocols

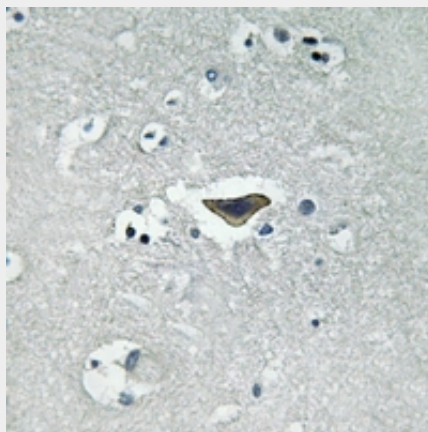
Provided below are standard protocols that you may find useful for product applications.

- [Western Blot](#)
- [Blocking Peptides](#)
- [Dot Blot](#)
- [Immunohistochemistry](#)
- [Immunofluorescence](#)
- [Immunoprecipitation](#)
- [Flow Cytometry](#)
- [Cell Culture](#)

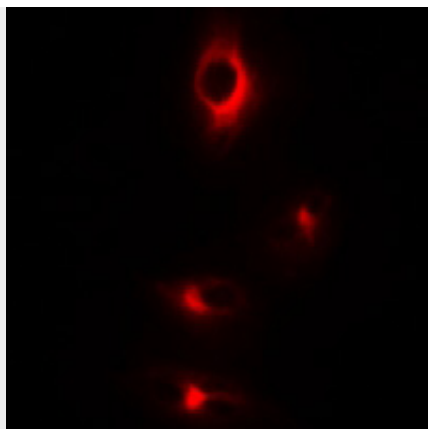
## Anti-CDC25 (pS916) Antibody - Images



Western blot analysis of CDC25 (pS916) expression in U87MG (A), Panc1 (B), A549 (C) whole cell lysates.



Immunohistochemical analysis of CDC25 (pS916) staining in human brain formalin fixed paraffin embedded tissue section. The section was pre-treated using heat mediated antigen retrieval with sodium citrate buffer (pH 6.0). The section was then incubated with the antibody at room temperature and detected using an HRP conjugated compact polymer system. DAB was used as the chromogen. The section was then counterstained with haematoxylin and mounted with DPX.



Immunofluorescent analysis of CDC25 (pS916) staining in A549 cells. Formalin-fixed cells were permeabilized with 0.1% Triton X-100 in TBS for 5-10 minutes and blocked with 3% BSA-PBS for 30 minutes at room temperature. Cells were probed with the primary antibody in 3% BSA-PBS and incubated overnight at 4 °C in a humidified chamber. Cells were washed with PBST and incubated with a Alexa Fluor 594-conjugated secondary antibody (red) in PBS at room temperature in the dark.

#### **Anti-CDC25 (pS916) Antibody - Background**

KLH-conjugated synthetic peptide encompassing a sequence within the center region of human CDC25 (pS916). The exact sequence is proprietary.