

Anti-Hairless Antibody
Rabbit polyclonal antibody to Hairless
Catalog # AP61384**Specification**

Anti-Hairless Antibody - Product Information

Application	WB, IF/IC, IHC
Primary Accession	O43593
Reactivity	Human, Rat
Host	Rabbit
Clonality	Polyclonal
Calculated MW	127495

Anti-Hairless Antibody - Additional Information**Gene ID** 55806**Other Names**

Protein hairless

Target/Specificity

Recognizes endogenous levels of Hairless protein.

Dilution

WB~~WB (1/500 - 1/1000), IH (1/50 - 1/200), IF/IC (1/100 - 1/500)

IF/IC~~N/A

IHC~~1:100~500

Format

Liquid in 0.42% Potassium phosphate, 0.87% Sodium chloride, pH 7.3, 30% glycerol, and 0.09% (W/V) sodium azide.

Storage

Store at -20 °C. Stable for 12 months from date of receipt

Anti-Hairless Antibody - Protein Information**Name** HR**Function**

Histone demethylase that specifically demethylates both mono- and dimethylated 'Lys-9' of histone H3. May act as a transcription regulator controlling hair biology (via targeting of collagens), neural activity, and cell cycle.

Cellular Location

Nucleus.

Tissue Location

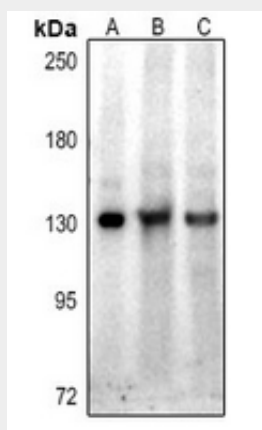
Strongest expression of isoforms 1 and 2 is seen in the small intestine, weaker expression in brain and colon, and trace expression is found in liver, pancreas, spleen, thymus, stomach, salivary gland, appendix and trachea. Isoform 1 is always the most abundant. Isoform 1 is exclusively expressed at low levels in kidney and testis. Isoform 2 is exclusively expressed at high levels in the skin.

Anti-Hairless Antibody - Protocols

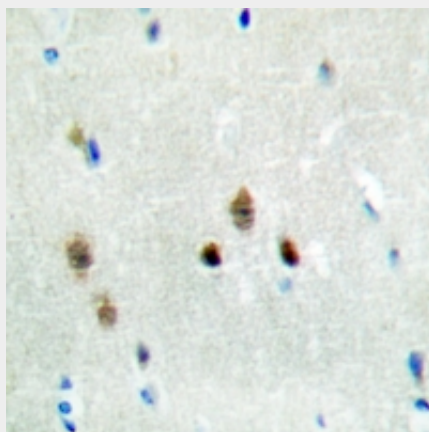
Provided below are standard protocols that you may find useful for product applications.

- [Western Blot](#)
- [Blocking Peptides](#)
- [Dot Blot](#)
- [Immunohistochemistry](#)
- [Immunofluorescence](#)
- [Immunoprecipitation](#)
- [Flow Cytometry](#)
- [Cell Culture](#)

Anti-Hairless Antibody - Images



Western blot analysis of Hairless expression in rat colon (A), A375 (B), MCF7 (C) whole cell lysates.



Immunohistochemical analysis of Hairless staining in human brain formalin fixed paraffin embedded tissue section. The section was pre-treated using heat mediated antigen retrieval with

sodium citrate buffer (pH 6.0). The section was then incubated with the antibody at room temperature and detected using an HRP conjugated compact polymer system. DAB was used as the chromogen. The section was then counterstained with haematoxylin and mounted with DPX.



Immunofluorescent analysis of Hairless staining in A549 cells. Formalin-fixed cells were permeabilized with 0.1% Triton X-100 in TBS for 5-10 minutes and blocked with 3% BSA-PBS for 30 minutes at room temperature. Cells were probed with the primary antibody in 3% BSA-PBS and incubated overnight at 4 °C in a humidified chamber. Cells were washed with PBST and incubated with a Alexa Fluor 594-conjugated secondary antibody (red) in PBS at room temperature in the dark.

Anti-Hairless Antibody - Background

KLH-conjugated synthetic peptide encompassing a sequence within the N-term region of human Hairless. The exact sequence is proprietary.