

**Anti-HMGXB3 Antibody**  
**Rabbit polyclonal antibody to HMGXB3**  
**Catalog # AP61385****Specification**

---

**Anti-HMGXB3 Antibody - Product Information**

Application	WB, IHC
Primary Accession	<a href="#">Q12766</a>
Reactivity	Human
Host	Rabbit
Clonality	Polyclonal
Calculated MW	141106

**Anti-HMGXB3 Antibody - Additional Information****Gene ID** 22993**Other Names**

KIAA0194; SMF; HMG domain-containing protein 3; HMG box-containing protein 3; Protein SMF

**Target/Specificity**

KLH-conjugated synthetic peptide encompassing a sequence within the N-term region of human HMGXB3. The exact sequence is proprietary.

**Dilution**WB~~WB (1/500 - 1/1000), IH (1/50 - 1/200)  
IHC~~1:100~500**Format**

Liquid in 0.42% Potassium phosphate, 0.87% Sodium chloride, pH 7.3, 30% glycerol, and 0.09% (W/V) sodium azide.

**Storage**

Store at -20 °C. Stable for 12 months from date of receipt

**Anti-HMGXB3 Antibody - Protein Information****Name** HMGXB3 ([HGNC:28982](#))**Cellular Location**

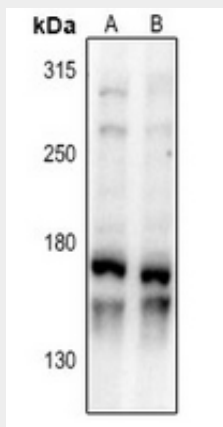
Nucleus {ECO:0000255|PROSITE-ProRule:PRU00267}.

**Anti-HMGXB3 Antibody - Protocols**

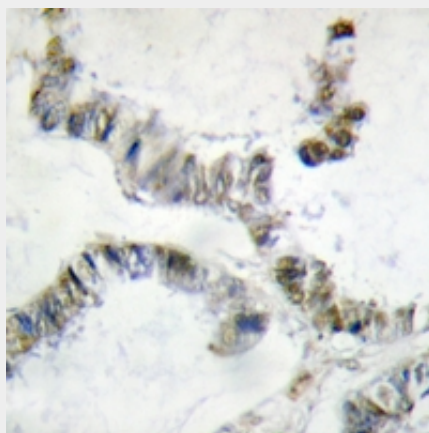
Provided below are standard protocols that you may find useful for product applications.

- [Western Blot](#)
- [Blocking Peptides](#)
- [Dot Blot](#)
- [Immunohistochemistry](#)
- [Immunofluorescence](#)
- [Immunoprecipitation](#)
- [Flow Cytometry](#)
- [Cell Culture](#)

### Anti-HMGXB3 Antibody - Images



Western blot analysis of HMGXB3 expression in A549 (A), MCF7 (B) whole cell lysates.



Immunohistochemical analysis of HMGXB3 staining in human colon cancer formalin fixed paraffin embedded tissue section. The section was pre-treated using heat mediated antigen retrieval with sodium citrate buffer (pH 6.0). The section was then incubated with the antibody at room temperature and detected using an HRP conjugated compact polymer system. DAB was used as the chromogen. The section was then counterstained with haematoxylin and mounted with DPX.

### Anti-HMGXB3 Antibody - Background

KLH-conjugated synthetic peptide encompassing a sequence within the N-term region of human HMGXB3. The exact sequence is proprietary.