

Anti-ABHD14B Antibody
Rabbit polyclonal antibody to ABHD14B
Catalog # AP61387**Specification**

Anti-ABHD14B Antibody - Product Information

Application	WB, IHC
Primary Accession	O96IU4
Other Accession	O8VCR7
Reactivity	Human, Mouse, Rat, Bovine
Host	Rabbit
Clonality	Polyclonal
Calculated MW	22346

Anti-ABHD14B Antibody - Additional Information**Gene ID** 84836**Other Names**

CIB; Alpha/beta hydrolase domain-containing protein 14B; Abhydrolase domain-containing protein 14B; CCG1-interacting factor B

Target/Specificity

Recognizes endogenous levels of ABHD14B protein.

Dilution

WB~~WB (1/500 - 1/1000), IH (1/50 - 1/200)

IHC~~1:100~500

Format

Liquid in 0.42% Potassium phosphate, 0.87% Sodium chloride, pH 7.3, 30% glycerol, and 0.09% (W/V) sodium azide.

Storage

Store at -20 °C.Stable for 12 months from date of receipt

Anti-ABHD14B Antibody - Protein Information**Name** ABHD14B {ECO:0000303|PubMed:31478652, ECO:0000312|HGNC:HGNC:28235}**Function**

Acts as an atypical protein-lysine deacetylase in vitro (PubMed:31478652). Catalyzes the deacetylation of lysine residues using CoA as substrate, generating acetyl-CoA and the free amine of protein- lysine residues (PubMed:31478652). Additional experiments are however required to confirm the protein-lysine deacetylase activity in vivo (Probable). Has hydrolase activity towards various surrogate p- nitrophenyl (pNp) substrates, such as pNp-butyrate, pNp-acetate and pNp-octanoate

in vitro, with a strong preference for pNp-acetate (PubMed:14672934, PubMed:31478652). May activate transcription (PubMed:14672934).

Cellular Location

Cytoplasm. Nucleus. Note=Predominantly cytoplasmic

Tissue Location

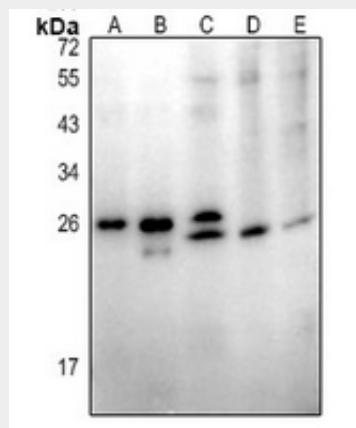
Ubiquitous (PubMed:14672934). Detected in spleen, thymus, prostate, testis, ovary, small intestine, colon, peripheral blood leukocyte, heart, placenta, lung, liver, skeletal muscle, pancreas and kidney (PubMed:14672934).

Anti-ABHD14B Antibody - Protocols

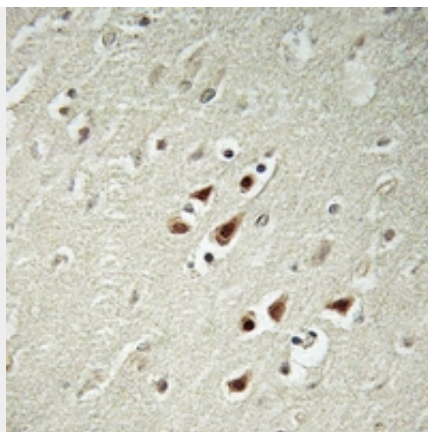
Provided below are standard protocols that you may find useful for product applications.

- [Western Blot](#)
- [Blocking Peptides](#)
- [Dot Blot](#)
- [Immunohistochemistry](#)
- [Immunofluorescence](#)
- [Immunoprecipitation](#)
- [Flow Cytometry](#)
- [Cell Culture](#)

Anti-ABHD14B Antibody - Images



Western blot analysis of ABHD14B expression in mouse spleen (A), rat thymus (B), Jurkat (C), K562 (D), HEK293T (E) whole cell lysates.



Immunohistochemical analysis of ABHD14B staining in human brain formalin fixed paraffin embedded tissue section. The section was pre-treated using heat mediated antigen retrieval with sodium citrate buffer (pH 6.0). The section was then incubated with the antibody at room temperature and detected using an HRP conjugated compact polymer system. DAB was used as the chromogen. The section was then counterstained with haematoxylin and mounted with DPX.

Anti-ABHD14B Antibody - Background

KLH-conjugated synthetic peptide encompassing a sequence within the C-term region of human ABHD14B. The exact sequence is proprietary.