

Anti-ADAMTS17 Antibody
Rabbit polyclonal antibody to ADAMTS17
Catalog # AP61388**Specification**

Anti-ADAMTS17 Antibody - Product Information

Application	WB, IHC
Primary Accession	Q8TE56
Reactivity	Human, Mouse
Host	Rabbit
Clonality	Polyclonal
Calculated MW	121127

Anti-ADAMTS17 Antibody - Additional Information**Gene ID** 170691**Other Names**

A disintegrin and metalloproteinase with thrombospondin motifs 17; ADAM-TS 17; ADAM-TS17; ADAMTS-17

Target/Specificity

KLH-conjugated synthetic peptide encompassing a sequence within the center region of human ADAMTS17. The exact sequence is proprietary.

Dilution

WB~~WB (1/500 - 1/1000), IH (1/50 - 1/200)
IHC~~1:100~500

Format

Liquid in 0.42% Potassium phosphate, 0.87% Sodium chloride, pH 7.3, 30% glycerol, and 0.09% (W/V) sodium azide.

Storage

Store at -20 °C. Stable for 12 months from date of receipt

Anti-ADAMTS17 Antibody - Protein Information**Name** ADAMTS17**Cellular Location**

Secreted, extracellular space, extracellular matrix

Tissue Location

Isoform 1 and isoform 2 are expressed at high levels in the lung, brain, whole eye and retina. Isoform 1 shows a weaker expression in the heart, kidney and skeletal muscle. Isoform 2 shows a weaker expression in the kidney, bone marrow and skeletal muscle. Isoform 1 and isoform 2 are expressed at high levels in the fetal heart, kidney, and whole eye, whereas a weak expression is

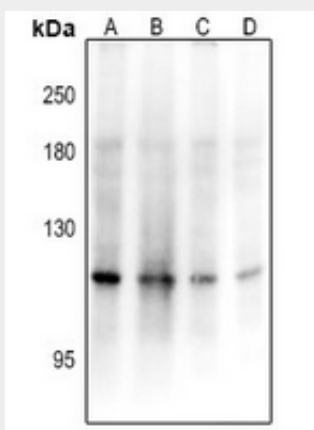
seen in the fetal liver.

Anti-ADAMTS17 Antibody - Protocols

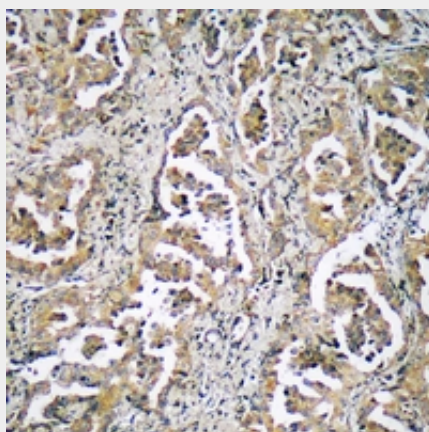
Provided below are standard protocols that you may find useful for product applications.

- [Western Blot](#)
- [Blocking Peptides](#)
- [Dot Blot](#)
- [Immunohistochemistry](#)
- [Immunofluorescence](#)
- [Immunoprecipitation](#)
- [Flow Cytometry](#)
- [Cell Culture](#)

Anti-ADAMTS17 Antibody - Images



Western blot analysis of ADAMTS17 expression in A549 (A), HEK293T (B), U87MG (C), BV2 (D) whole cell lysates.



Immunohistochemical analysis of ADAMTS17 staining in human lung cancer formalin fixed paraffin embedded tissue section. The section was pre-treated using heat mediated antigen retrieval with sodium citrate buffer (pH 6.0). The section was then incubated with the antibody at room temperature and detected using an HRP conjugated compact polymer system. DAB was used as the chromogen. The section was then counterstained with haematoxylin and mounted with DPX.

Anti-ADAMTS17 Antibody - Background

KLH-conjugated synthetic peptide encompassing a sequence within the center region of human ADAMTS17. The exact sequence is proprietary.