

Anti-PLA2G4D Antibody
Rabbit polyclonal antibody to PLA2G4D
Catalog # AP61389**Specification**

Anti-PLA2G4D Antibody - Product Information

Application	WB, IHC
Primary Accession	Q86XP0
Reactivity	Human, Monkey
Host	Rabbit
Clonality	Polyclonal
Calculated MW	91952

Anti-PLA2G4D Antibody - Additional Information**Gene ID** 283748**Other Names**

Cytosolic phospholipase A2 delta; cPLA2-delta; Phospholipase A2 group IVD

Target/Specificity

KLH-conjugated synthetic peptide encompassing a sequence within the center region of human PLA2G4D. The exact sequence is proprietary.

Dilution

WB~~WB (1/500 - 1/1000), IH (1/50 - 1/200)

IHC~~1:100~500

Format

Liquid in 0.42% Potassium phosphate, 0.87% Sodium chloride, pH 7.3, 30% glycerol, and 0.09% (W/V) sodium azide.

Storage

Store at -20 °C. Stable for 12 months from date of receipt

Anti-PLA2G4D Antibody - Protein Information**Name** PLA2G4D ([HGNC:30038](#))**Function**

Calcium-dependent phospholipase A2 that selectively hydrolyzes glycerophospholipids in the sn-2 position (PubMed: [14709560](http://www.uniprot.org/citations/14709560)). Has a preference for linoleic acid at the sn-2 position (PubMed: [14709560](http://www.uniprot.org/citations/14709560)).

Cellular Location

Cytoplasm, cytosol {ECO:0000250|UniProtKB:Q50L43}. Membrane {ECO:0000250|UniProtKB:Q50L43}; Peripheral membrane protein

{ECO:0000250|UniProtKB:Q50L43}; Cytoplasmic side {ECO:0000250|UniProtKB:Q50L43}.

Note=Translocates to perinuclear membranes that may correspond to endoplasmic reticulum or Golgi in a calcium-dependent fashion. {ECO:0000250|UniProtKB:Q50L43}

Tissue Location

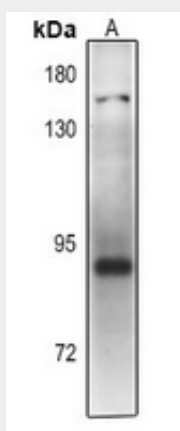
Expressed in stratified squamous epithelia, such as those in skin and cervix, but not in other tissues (PubMed:14709560) Strongly expressed in the upper spinous layer of the psoriatic epidermis, expressed weakly and discontinuously in atopic dermatitis and mycosis fungoides, and not detected in the epidermis of normal skin (PubMed:14709560).

Anti-PLA2G4D Antibody - Protocols

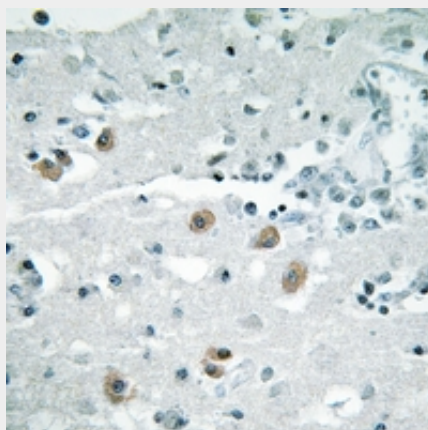
Provided below are standard protocols that you may find useful for product applications.

- [Western Blot](#)
- [Blocking Peptides](#)
- [Dot Blot](#)
- [Immunohistochemistry](#)
- [Immunofluorescence](#)
- [Immunoprecipitation](#)
- [Flow Cytometry](#)
- [Cell Culture](#)

Anti-PLA2G4D Antibody - Images



Western blot analysis of PLA2G4D expression in Hela (A) whole cell lysates.



Immunohistochemical analysis of PLA2G4D staining in human brain formalin fixed paraffin embedded tissue section. The section was pre-treated using heat mediated antigen retrieval with sodium citrate buffer (pH 6.0). The section was then incubated with the antibody at room temperature and detected using an HRP conjugated compact polymer system. DAB was used as the chromogen. The section was then counterstained with haematoxylin and mounted with DPX.

Anti-PLA2G4D Antibody - Background

KLH-conjugated synthetic peptide encompassing a sequence within the center region of human PLA2G4D. The exact sequence is proprietary.