

Anti-ALPL Antibody
Rabbit polyclonal antibody to ALPL
Catalog # AP61396**Specification**

Anti-ALPL Antibody - Product Information

Application	WB
Primary Accession	P05186
Reactivity	Human, Rat
Host	Rabbit
Clonality	Polyclonal
Calculated MW	57305

Anti-ALPL Antibody - Additional Information**Gene ID** 249**Other Names**

Alkaline phosphatase tissue-nonspecific isozyme; AP-TNAP; TNSALP; Alkaline phosphatase liver/bone/kidney isozyme

Target/Specificity

Recognizes endogenous levels of ALPL protein.

Dilution

WB~~WB (1/500 - 1/1000)

Format

Liquid in 0.42% Potassium phosphate, 0.87% Sodium chloride, pH 7.3, 30% glycerol, and 0.09% (W/V) sodium azide.

Storage

Store at -20 °C. Stable for 12 months from date of receipt

Anti-ALPL Antibody - Protein Information**Name** ALPL {ECO:0000303|PubMed:8406453, ECO:0000312|HGNC:HGNC:438}**Function**

Alkaline phosphatase that metabolizes various phosphate compounds and plays a key role in skeletal mineralization and adaptive thermogenesis (PubMed: [12162492](http://www.uniprot.org/citations/12162492), PubMed: [23688511](http://www.uniprot.org/citations/23688511), PubMed: [25982064](http://www.uniprot.org/citations/25982064)). Has broad substrate specificity and can hydrolyze a considerable variety of compounds: however, only a few substrates, such as diphosphate (inorganic pyrophosphate; PPI), pyridoxal 5'-phosphate (PLP) and N- phosphocreatine are natural substrates (PubMed: [12162492](http://www.uniprot.org/citations/12162492), PubMed: [12162492](http://www.uniprot.org/citations/12162492)).

[2220817](http://www.uniprot.org/citations/2220817)). Plays an essential role in skeletal and dental mineralization via its ability to hydrolyze extracellular diphosphate, a potent mineralization inhibitor, to phosphate: it thereby promotes hydroxyapatite crystal formation and increases inorganic phosphate concentration (PubMed: [23688511](http://www.uniprot.org/citations/23688511), PubMed: [25982064](http://www.uniprot.org/citations/25982064)). Acts in a non-redundant manner with PHOSPHO1 in skeletal mineralization: while PHOSPHO1 mediates the initiation of hydroxyapatite crystallization in the matrix vesicles (MVs), ALPL/TNAP catalyzes the spread of hydroxyapatite crystallization in the extracellular matrix (By similarity). Also promotes dephosphorylation of osteopontin (SSP1), an inhibitor of hydroxyapatite crystallization in its phosphorylated state; it is however unclear whether ALPL/TNAP mediates SSP1 dephosphorylation via a direct or indirect manner (By similarity). Catalyzes dephosphorylation of PLP to pyridoxal (PL), the transportable form of vitamin B6, in order to provide a sufficient amount of PLP in the brain, an essential cofactor for enzymes catalyzing the synthesis of diverse neurotransmitters (PubMed: [20049532](http://www.uniprot.org/citations/20049532), PubMed: [2220817](http://www.uniprot.org/citations/2220817)). Additionally, also able to mediate ATP degradation in a stepwise manner to adenosine, thereby regulating the availability of ligands for purinergic receptors (By similarity). Also capable of dephosphorylating microbial products, such as lipopolysaccharides (LPS) as well as other phosphorylated small-molecules, such as poly-inosine:cytosine (poly I:C) (PubMed: [28448526](http://www.uniprot.org/citations/28448526)). Acts as a key regulator of adaptive thermogenesis as part of the futile creatine cycle: localizes to the mitochondria of thermogenic fat cells and acts by mediating hydrolysis of N-phosphocreatine to initiate a futile cycle of creatine dephosphorylation and phosphorylation (By similarity). During the futile creatine cycle, creatine and N-phosphocreatine are in a futile cycle, which dissipates the high energy charge of N-phosphocreatine as heat without performing any mechanical or chemical work (By similarity).

Cellular Location

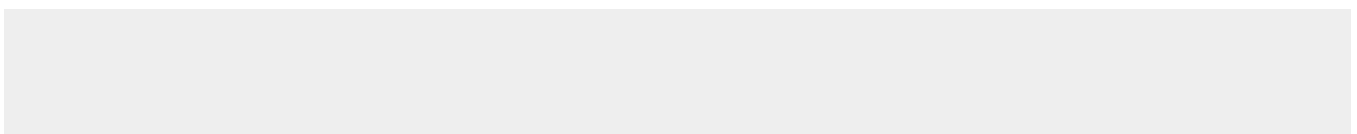
Cell membrane; Lipid-anchor, GPI-anchor Extracellular vesicle membrane {ECO:0000250|UniProtKB:P09242}; Lipid-anchor, GPI-anchor {ECO:0000250|UniProtKB:P09242}. Mitochondrion membrane {ECO:0000250|UniProtKB:P09242}; Lipid-anchor, GPI-anchor {ECO:0000250|UniProtKB:P09242}. Mitochondrion intermembrane space {ECO:0000250|UniProtKB:P09242}. Note=Localizes to special class of extracellular vesicles, named matrix vesicles (MVs), which are released by osteogenic cells. Localizes to the mitochondria of thermogenic fat cells: tethered to mitochondrial membranes via a GPI-anchor and probably resides in the mitochondrion intermembrane space {ECO:0000250|UniProtKB:P09242}

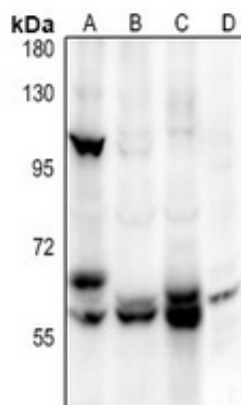
Anti-ALPL Antibody - Protocols

Provided below are standard protocols that you may find useful for product applications.

- [Western Blot](#)
- [Blocking Peptides](#)
- [Dot Blot](#)
- [Immunohistochemistry](#)
- [Immunofluorescence](#)
- [Immunoprecipitation](#)
- [Flow Cytometry](#)
- [Cell Culture](#)

Anti-ALPL Antibody - Images





Western blot analysis of ALPL expression in SHSY5Y (A), HEK293T (B), LO2 (C), rat lung (D) whole cell lysates.

Anti-ALPL Antibody - Background

KLH-conjugated synthetic peptide encompassing a sequence within the center region of human ALPL. The exact sequence is proprietary.