

**EDG3 Antibody (N-term)**  
**Purified Rabbit Polyclonal Antibody (Pab)**  
**Catalog # AP6139a****Specification**

---

**EDG3 Antibody (N-term) - Product Information**

Application	WB,E
Primary Accession	<a href="#">Q99500</a>
Reactivity	Human, Mouse
Host	Rabbit
Clonality	Polyclonal
Isotype	Rabbit IgG
Calculated MW	42250
Antigen Region	1-30

**EDG3 Antibody (N-term) - Additional Information****Gene ID** 1903**Other Names**

Sphingosine 1-phosphate receptor 3, S1P receptor 3, S1P3, Endothelial differentiation G-protein coupled receptor 3, Sphingosine 1-phosphate receptor Edg-3, S1P receptor Edg-3, S1PR3, EDG3

**Target/Specificity**

This EDG3 antibody is generated from rabbits immunized with a KLH conjugated synthetic peptide between 1-30 amino acids from the N-terminal region of human EDG3.

**Dilution**

WB~~1:1000

E~~Use at an assay dependent concentration.

**Format**

Purified polyclonal antibody supplied in PBS with 0.09% (W/V) sodium azide. This antibody is prepared by Saturated Ammonium Sulfate (SAS) precipitation followed by dialysis against PBS.

**Storage**

Maintain refrigerated at 2-8°C for up to 2 weeks. For long term storage store at -20°C in small aliquots to prevent freeze-thaw cycles.

**Precautions**

EDG3 Antibody (N-term) is for research use only and not for use in diagnostic or therapeutic procedures.

**EDG3 Antibody (N-term) - Protein Information****Name** S1PR3 ([HGNC:3167](#))**Function** Receptor for the lysosphingolipid sphingosine 1-phosphate (S1P). S1P is a bioactive

lysophospholipid that elicits diverse physiological effect on most types of cells and tissues. When expressed in rat HTC4 hepatoma cells, is capable of mediating S1P-induced cell proliferation and suppression of apoptosis.

**Cellular Location**

Cell membrane; Multi-pass membrane protein.

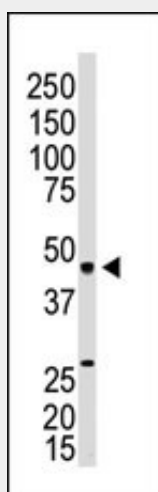
**Tissue Location**

Expressed in all tissues, but most abundantly in heart, placenta, kidney, and liver

**EDG3 Antibody (N-term) - Protocols**

Provided below are standard protocols that you may find useful for product applications.

- [Western Blot](#)
- [Blocking Peptides](#)
- [Dot Blot](#)
- [Immunohistochemistry](#)
- [Immunofluorescence](#)
- [Immunoprecipitation](#)
- [Flow Cytometry](#)
- [Cell Culture](#)

**EDG3 Antibody (N-term) - Images**

The anti-EDG3 N-term Antibody (Cat.#AP6139a) is used in Western blot to detect EDG3 in mouse kidney lysate.

**EDG3 Antibody (N-term) - Background**

EDG3 is a member of the EDG family of receptors, which are G protein-coupled receptors. This protein has been identified as a functional receptor for sphingosine 1-phosphate and likely contributes to the regulation of angiogenesis and vascular endothelial cell function.

**EDG3 Antibody (N-term) - References**

Licht, T., et al., Blood 102(6):2099-2107 (2003).  
Himmel, H.M., et al., Mol. Pharmacol. 58(2):449-454 (2000).  
An, S., et al., J. Biol. Chem. 275(1):288-296 (2000).

Ancellin, N., et al., J. Biol. Chem. 274(27):18997-19002 (1999).  
Lee, M.J., et al., Cell 99(3):301-312 (1999).