

Anti-CD307e Antibody
Rabbit polyclonal antibody to CD307e
Catalog # AP61400**Specification**

Anti-CD307e Antibody - Product Information

Application	WB
Primary Accession	O96RD9
Reactivity	Human
Host	Rabbit
Clonality	Polyclonal
Calculated MW	106437

Anti-CD307e Antibody - Additional Information**Gene ID** 83416**Other Names**

FCRH5; IRTA2; Fc receptor-like protein 5; FcR-like protein 5; FcRL5; BXMAS1; Fc receptor homolog 5; FcRH5; Immune receptor translocation-associated protein 2; CD307e

Target/Specificity

Recognizes endogenous levels of CD307e protein.

Dilution

WB~~WB (1/500 - 1/1000)

Format

Liquid in 0.42% Potassium phosphate, 0.87% Sodium chloride, pH 7.3, 30% glycerol, and 0.09% (W/V) sodium azide.

Storage

Store at -20 °C. Stable for 12 months from date of receipt

Anti-CD307e Antibody - Protein Information**Name** FCRL5**Synonyms** FCRH5, IRTA2**Function**

Plays an important role in B-cell response to antigen that acts both as a negative or positive coreceptor. Inhibits B-cell receptor (BCR) signaling in the absence of CR2 stimulation but engagement with CR2 and the BCR lead to a superior calcium response compared to CR2 and BCR costimulation (PubMed:30107486). May be involved in B-cell development and differentiation in peripheral lymphoid organs and may be useful markers of B-cell stages. May have an immunoregulatory role in marginal zone B-cells. May play a role in fertilization (By similarity).

Cellular Location

Cell membrane; Single-pass type I membrane protein

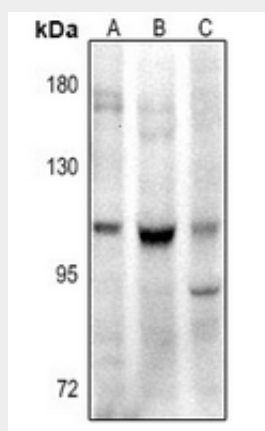
Tissue Location

Expressed in marginal zone B-cells, immunoblasts, tonsillar germinal center centrocytes and in the intraepithelial and interfollicular regions of the tonsil. Expressed in many lymphoma cell lines and on hairy cell leukemia cells. Isoform 1, isoform 3, isoform 4 and isoform 5 are detected in lymph node, spleen, bone marrow, and small intestine with preponderance of isoform 3. Expressed in mature and memory B-cells and down-regulated in germinal center cells (at protein level).

Anti-CD307e Antibody - Protocols

Provided below are standard protocols that you may find useful for product applications.

- [Western Blot](#)
- [Blocking Peptides](#)
- [Dot Blot](#)
- [Immunohistochemistry](#)
- [Immunofluorescence](#)
- [Immunoprecipitation](#)
- [Flow Cytometry](#)
- [Cell Culture](#)

Anti-CD307e Antibody - Images

Western blot analysis of CD307e expression in Jurkat (A), K562 (B), Myla2059 (C) whole cell lysates.

Anti-CD307e Antibody - Background

KLH-conjugated synthetic peptide encompassing a sequence within the center region of human CD307e. The exact sequence is proprietary.