

Anti-Plasminogen Antibody
Rabbit polyclonal antibody to Plasminogen
Catalog # AP61402**Specification**

Anti-Plasminogen Antibody - Product Information

Application	WB
Primary Accession	P00747
Other Accession	P20918
Reactivity	Human, Mouse, Rat
Host	Rabbit
Clonality	Polyclonal
Calculated MW	90569

Anti-Plasminogen Antibody - Additional Information**Gene ID** 5340**Other Names**

Plasminogen

Target/Specificity

KLH-conjugated synthetic peptide encompassing a sequence within the center region of human Plasminogen. The exact sequence is proprietary.

Dilution

WB~~WB (1/500 - 1/1000)

Format

Liquid in 0.42% Potassium phosphate, 0.87% Sodium chloride, pH 7.3, 30% glycerol, and 0.09% (W/V) sodium azide.

Storage

Store at -20 °C. Stable for 12 months from date of receipt

Anti-Plasminogen Antibody - Protein Information**Name** PLG**Function**

Plasmin dissolves the fibrin of blood clots and acts as a proteolytic factor in a variety of other processes including embryonic development, tissue remodeling, tumor invasion, and inflammation. In ovulation, weakens the walls of the Graafian follicle. It activates the urokinase-type plasminogen activator, collagenases and several complement zymogens, such as C1, C4 and C5 (PubMed: <http://www.uniprot.org/citations/6447255> target="_blank">6447255). Cleavage of fibronectin and laminin leads to cell detachment and apoptosis. Also cleaves fibrin, thrombospondin and von Willebrand factor. Its role in tissue remodeling and tumor invasion may be modulated by CSPG4. Binds to cells.

Cellular Location

Secreted. Note=Locates to the cell surface where it is proteolytically cleaved to produce the active plasmin. Interaction with HRG tethers it to the cell surface

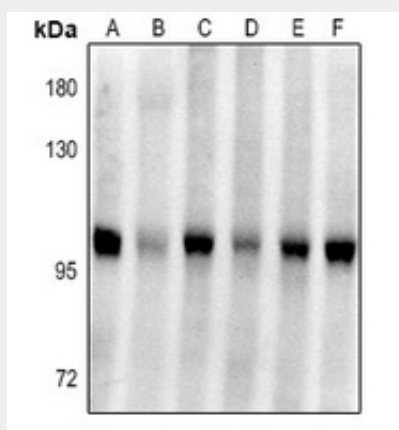
Tissue Location

Present in plasma and many other extracellular fluids. It is synthesized in the liver

Anti-Plasminogen Antibody - Protocols

Provided below are standard protocols that you may find useful for product applications.

- [Western Blot](#)
- [Blocking Peptides](#)
- [Dot Blot](#)
- [Immunohistochemistry](#)
- [Immunofluorescence](#)
- [Immunoprecipitation](#)
- [Flow Cytometry](#)
- [Cell Culture](#)

Anti-Plasminogen Antibody - Images

Western blot analysis of Plasminogen expression in mouse liver (A), rat liver (B), AML12 (C), H9C2 (D), HepG2 (E), LO2 (F) whole cell lysates.

Anti-Plasminogen Antibody - Background

KLH-conjugated synthetic peptide encompassing a sequence within the center region of human Plasminogen. The exact sequence is proprietary.