

**Anti-Thioredoxin 2 Antibody**  
**Rabbit polyclonal antibody to Thioredoxin 2**  
**Catalog # AP61407****Specification**

---

**Anti-Thioredoxin 2 Antibody - Product Information**

Application	WB
Primary Accession	<a href="#">Q99757</a>
Other Accession	<a href="#">P97493</a>
Reactivity	Human, Mouse, Rat, Bovine
Host	Rabbit
Clonality	Polyclonal
Calculated MW	18383

**Anti-Thioredoxin 2 Antibody - Additional Information****Gene ID** 25828**Other Names**

TRX2; Thioredoxin mitochondrial; MTRX; Mt-Trx; Thioredoxin-2

**Target/Specificity**

Recognizes endogenous levels of Thioredoxin 2 protein.

**Dilution**

WB~~WB (1/500 - 1/1000)

**Format**

Liquid in 0.42% Potassium phosphate, 0.87% Sodium chloride, pH 7.3, 30% glycerol, and 0.09% (W/V) sodium azide.

**Storage**

Store at -20 °C. Stable for 12 months from date of receipt

**Anti-Thioredoxin 2 Antibody - Protein Information****Name** TXN2**Synonyms** TRX2**Function**

Important for the control of mitochondrial reactive oxygen species homeostasis, apoptosis regulation and cell viability (PubMed: <a href="http://www.uniprot.org/citations/12032145" target="\_blank">12032145</a>, PubMed: <a href="http://www.uniprot.org/citations/12080052" target="\_blank">12080052</a>, PubMed: <a href="http://www.uniprot.org/citations/26626369" target="\_blank">26626369</a>) Is involved in various redox reactions including the reduction of protein disulfide bonds, through the reversible oxidation of its active center dithiol to a disulfide (By similarity).

**Cellular Location**

Mitochondrion

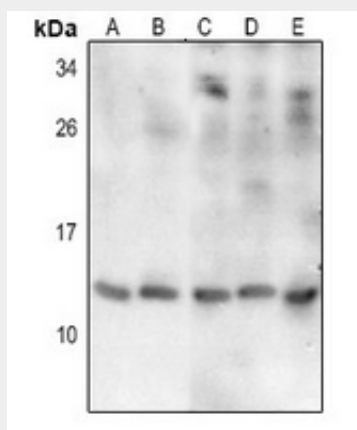
**Tissue Location**

Widely expressed in adult (at protein level) and fetal tissues.

**Anti-Thioredoxin 2 Antibody - Protocols**

Provided below are standard protocols that you may find useful for product applications.

- [Western Blot](#)
- [Blocking Peptides](#)
- [Dot Blot](#)
- [Immunohistochemistry](#)
- [Immunofluorescence](#)
- [Immunoprecipitation](#)
- [Flow Cytometry](#)
- [Cell Culture](#)

**Anti-Thioredoxin 2 Antibody - Images**

Western blot analysis of Thioredoxin 2 expression in HEK293T (A), Hela (B), mouse liver (C), rat lung (D), rat liver (E) whole cell lysates.

**Anti-Thioredoxin 2 Antibody - Background**

KLH-conjugated synthetic peptide encompassing a sequence within the C-term region of human Thioredoxin 2. The exact sequence is proprietary.