

Anti-CD159c Antibody
Rabbit polyclonal antibody to CD159c
Catalog # AP61410**Specification**

Anti-CD159c Antibody - Product Information

Application	WB
Primary Accession	P26717
Reactivity	Human, Mouse, Rat
Host	Rabbit
Clonality	Polyclonal
Calculated MW	26159

Anti-CD159c Antibody - Additional Information**Gene ID** 3822**Other Names**

NKG2C; NKG2-C type II integral membrane protein; CD159 antigen-like family member C; NK cell receptor C; NKG2-C-activating NK receptor; CD159c

Target/Specificity

Recognizes endogenous levels of CD159c protein.

Dilution

WB~~WB (1/500 - 1/1000)

Format

Liquid in 0.42% Potassium phosphate, 0.87% Sodium chloride, pH 7.3, 30% glycerol, and 0.09% (W/V) sodium azide.

Storage

Store at -20 °C. Stable for 12 months from date of receipt

Anti-CD159c Antibody - Protein Information**Name** KLRC2**Synonyms** NKG2C {ECO:0000303|PubMed:18083576}**Function**

Immune activating receptor involved in self-nonself discrimination. In complex with KLRD1 on cytotoxic lymphocyte subsets, recognizes non-classical major histocompatibility (MHC) class Ib HLA-E loaded with signal sequence-derived peptides from non-classical MHC class Ib HLA-G molecules, likely playing a role in the generation and effector functions of adaptive natural killer (NK) cells and in maternal-fetal tolerance during pregnancy (PubMed:30134159, PubMed:37264229, PubMed:37264229).

[9754572](http://www.uniprot.org/citations/9754572)). Regulates the effector functions of terminally differentiated cytotoxic lymphocyte subsets, and in particular may play a role in adaptive NK cell response to viral infection (PubMed:
[20952657](http://www.uniprot.org/citations/20952657), PubMed:
[21825173](http://www.uniprot.org/citations/21825173)). Upon HLA-E-peptide binding, transmits intracellular signals via the adapter protein TYROBP/DAP12, triggering the phosphorylation of proximal signaling molecules and cell activation (PubMed:
[15940674](http://www.uniprot.org/citations/15940674), PubMed:
[9655483](http://www.uniprot.org/citations/9655483)).

Cellular Location

Cell membrane; Single-pass type II membrane protein

Tissue Location

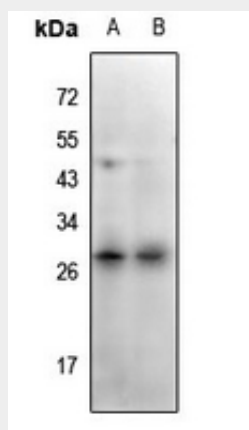
Expressed in NK cell subsets, in particular in adaptive CD57-positive NK cells (at protein level) (PubMed:20952657, PubMed:21825173). Expressed in terminally differentiated cytotoxic gamma-delta T cells (at protein level) (PubMed:20952657). Expressed in alpha-beta T cells subsets (at protein level) (PubMed:20952657). KLRD1- KLRC1 and KLRD1-KLRC2 are differentially expressed within NK and T cell populations, with only minor subsets expressing both receptor complexes (at protein level) (PubMed:20952657).

Anti-CD159c Antibody - Protocols

Provided below are standard protocols that you may find useful for product applications.

- [Western Blot](#)
- [Blocking Peptides](#)
- [Dot Blot](#)
- [Immunohistochemistry](#)
- [Immunofluorescence](#)
- [Immunoprecipitation](#)
- [Flow Cytometry](#)
- [Cell Culture](#)

Anti-CD159c Antibody - Images



Western blot analysis of CD159c expression in rat spleen (A), mouse spleen (B) whole cell lysates.

Anti-CD159c Antibody - Background

KLH-conjugated synthetic peptide encompassing a sequence within the center region of human

CD159c. The exact sequence is proprietary.