

Anti-Histone H2B (Butyryl-K20) Antibody
Rabbit polyclonal antibody to Histone H2B (Butyryl-K20)
Catalog # AP61421

Specification

Anti-Histone H2B (Butyryl-K20) Antibody - Product Information

Application	WB, IHC
Primary Accession	P33778 , P62807
Other Accession	P70696 , Q64475 , Q6ZWH9
Reactivity	Human, Mouse, Rat, Bovine
Host	Rabbit
Clonality	Polyclonal

Anti-Histone H2B (Butyryl-K20) Antibody - Additional Information

Other Names

HIST1H2BA; TSH2B; Histone H2B type 1-A; Histone H2B testis; Testis-specific histone H2B; HIST1H2BB; H2BFF; Histone H2B type 1-B; Histone H2B.1; Histone H2B.f; H2B/f; HIST1H2BC; H2BFL; HIST1H2BE; H2BFH; HIST1H2BF; H2BFG; HIST1H2BG; H2BFA; HIST1H2BI; H2BFB; Histone H2B type 1-C/E/F/G/I; Histone H2B.1 A; Histone H2B.a; H2B/a; Histone H2B.g; H2B/g; Histone H2B.h; H2B/h; Histone H2B.k; H2B/k; Histone H2B.l; H2B/l

Target/Specificity

Recognizes endogenous levels of Histone H2B with a site at Butyryl-K20 protein.

Dilution

WB~~WB (1/500 - 1/1000), IH (1/50 - 1/200)

IHC~~1:100~500

Format

Liquid in 0.42% Potassium phosphate, 0.87% Sodium chloride, pH 7.3, 30% glycerol, and 0.09% (W/V) sodium azide.

Storage

Store at -20 °C. Stable for 12 months from date of receipt

Anti-Histone H2B (Butyryl-K20) Antibody - Protein Information

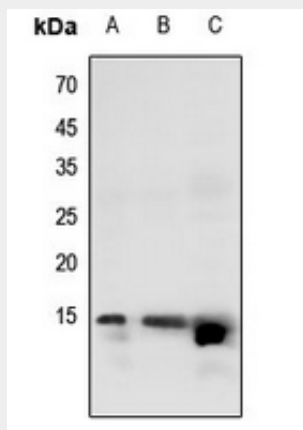
Anti-Histone H2B (Butyryl-K20) Antibody - Protocols

Provided below are standard protocols that you may find useful for product applications.

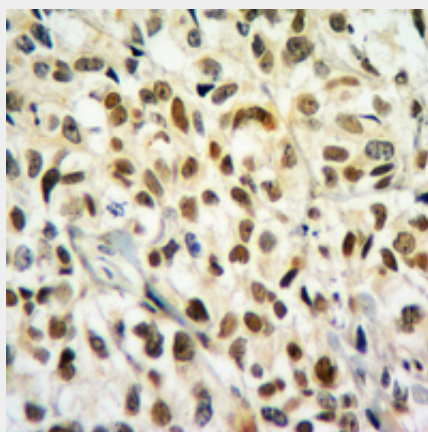
- [Western Blot](#)
- [Blocking Peptides](#)
- [Dot Blot](#)
- [Immunohistochemistry](#)

- [Immunofluorescence](#)
- [Immunoprecipitation](#)
- [Flow Cytometry](#)
- [Cell Culture](#)

Anti-Histone H2B (Butyryl-K20) Antibody - Images



Western blot analysis of Histone H2B (Butyryl-K20) expression in HEK293T (A), U2OS (B), DLD (C) whole cell lysates.



Immunohistochemical analysis of Histone H2B (Butyryl-K20) staining in human breast cancer formalin fixed paraffin embedded tissue section. The section was pre-treated using heat mediated antigen retrieval with sodium citrate buffer (pH 6.0). The section was then incubated with the antibody at room temperature and detected using an HRP conjugated compact polymer system. DAB was used as the chromogen. The section was then counterstained with haematoxylin and mounted with DPX.

Anti-Histone H2B (Butyryl-K20) Antibody - Background

KLH-conjugated synthetic peptide encompassing a sequence within the N-term region of human Histone H2B with a site at Butyryl-K20. The exact sequence is proprietary.